

Aimco Piping Systems provides for its customers expertise and a wide range products solutions from plumbing, mechanical, HVAC and industrial pipe supports and fixings:

- Rubber Lined Pipe Fixings
- Unlined Pipe Fixings
- Ducting Support Products
- Support Channels & Accessories
- Sprinkler Pipe Supports
- Fixing Fasteners & Accessories
- Insulated Pipe Supports
- Pipe Expansion Products
- Heavy Duty Pipe Supports
- Sound Absorption Range
- Stainless Steel Range
- Plastic Pipe Fixings
- Pipe Connectors



PIPE SUPPORTS & FIXINGS CATALOGUE



Rubber Lined Pipe Fixings

| | | | | |
|--|---|--|--|--|
|  Art. 250 Traditional Type |  Art. 230 Classic Type |  Art. 232 Classic E Type (I) |  Art. 234 Classic E Type (II) |  Art. 235 Spanish Type |
|  Art. 270 <i>EZLock</i> ™ Type (I) |  Art. 272 <i>EZLock</i> ™ Type (II) |  Art. 290 Click Type |  Art. 280 <i>InnerLock</i> ™ Type |  Art. 240 <i>RapidClick</i> ™ Type |
|  Art. 260 Big Open Type |  Art. 210 For Plastic Pipe |  Art. 212 For Plastic Pipe |  Art. 282 Sliding <i>InnerLock</i> ™ Type |  Art. 220 Silicone Rubber Type |
|  Art. 218 Pipe Clamp Set Package |  Art. 254 With Welded 3G Nut |  Art. 256 With Connecting Socket |  Art. 258 With Outer Thread Connecting |  Art. 200 Heavy Duty Type |
|  Art. 202 Heavy Duty M16 Type |  Art. 204 Heavy Duty Type |  Art. 207 Heavy Duty M16 Type |  Art. 273 For PVC Pipe |  Art. 259 With CO ₂ Welded Head |
|  Art. 287 With Short Pin |  Art. 288 With Long Pin |  Art. 251 Classic Type (I) |  Art. 253 Classic Type (II) |  Art. 261 Classic Type (III) |

Rubber Lined Pipe Fixings

| | | | | |
|---|--|--|--|---|
| Art. 291 RapidClick™ Type (I) | Art. 211 RapidClick™ Type (II) | Art. 281 InnerLock™ Type | Art. 243 RapidClick™ Type (III) | Art. 233 SafeLock™ Type (I) |
| Art. 241 SafeLock™ Type (II) | Art. 231 SafeLock™ Type (III) | Art. 283 SafeLock™ Type (IV) | Art. 271 Classic Eco Type | Art. 227 Sliding InnerLock™ Type |
| Art. 221 For Plastic Pipe | Art. 225 For Plastic Pipe | Art. 213 OnePush™ Type | Art. 216 OnePush™ Type | Art. 208 Down Pipe Support |
| Art. 222 Japanese Type | Art. 215 Electro-Galvanised | Art. 252 With Nailed Pin | Art. 257 With Nailed Pin | Art. 255 With Nailed Pin |
| Art. 265 Electro-Galvanised | Art. 263 Electro-Galvanised | Art. 275 Adjustable Type | Art. 217 With Reinforced Band Ends | Art. 219 W/O Reinforced Band Ends |
| Art. 245 Electro-Galvanised | Art. 238 Series Type 1 | Art. 238 Series Type 2 | Art. 238 Series Type 3 | Art. 238 Series Type 4 |






Rubber Lined Pipe Fixings



Unlined Pipe Fixings



Unlined Pipe Fixings

| | | | | |
|--|--|--|---|---|
|  Art. 346 Australian Type |  Art. 347 Australian Type |  Art. 348 Australian Type |  Art. 357 Australian Type |  Art. 358 Australian Type |
|  Art. 323 Suspension Type |  Art. 322 Heavy Duty Type |  Art. 320 European Type |  Art. 330 With Knurled Nut |  Art. 340 Sprinkler Band Hanger |
|  Art. 390 Clevis Pipe Hanger |  Art. 650 Toggle Plug |  Art. 380 DIN3567 Form A |  Art. 383 DIN3567 Form B |  Art. 385 DIN3567 Form C |
|  Art. 333 Oval Pipe Clamp |  Art. 360 Standard Riser Clamp |  Art. 362 Doppel Pipe Clamp |  Art. 363 Doppel Pipe Clamp |  Art. 365 Twin Pipe Clamp |
|  Art. 373 Suspension Type |  Art. 326 Swedish Type Clamp |  Art. 329 Swedish Type Clamp |  Art. 301 For Steel Tube |  Art. 305 For Cast Iron Tube |
|  Art. 306 For Plastic Tube |  Art. 302 Drain Pipe Clamp |  Art. 304 Drain Pipe Clamp |  Art. 303 Drain Pipe Clamp |  Art. 328 Drain Pipe Holder |

Unlined Pipe Fixings

| | | | | |
|---|---|--|--|---|
|  Art. 308 Drain Pipe Holder |  Art. 309 Drain Pipe Holder |  Art. 312 Drain Pipe Holder |  Art. 311 Drain Pipe Holder |  Art. 327 Drain Pipe Filter |
|  Art. 511 Conduit Beam Clamp |  Art. 331 Conduit Clamp |  Art. 317 Single Saddle Clip |  Art. 315 Single Bracket Clip |  Art. 319 Double Pipe Bracket |
|  Art. 209 Pipe Fixing Hook |  Art. 703 Impact Nail |  Art. 705 Impact Nail Setting Tool |  Art. 345 Strut Pipe Clamp |  Art. 702 U-Bolt, DIN3570 |
|  Art. 700 U-Bolt |  Art. 394 German Type Hose Clamp |  Art. 374 German Type Hose Clamp |  Art. 391 Euro Type Hose Clamp |  Art. 341 British Type Hose Clamp |
|  Art. 336 British Type Hose Clamp |  Art. 366 British Type Hose Clamp | | | |

Sprinkler Support Products

| | | | | |
|--|--|--|---|--|
|  <p>Art. 670 Beam Clamp</p> |  <p>Art. 680 Steel Beam Clamp</p> |  <p>Art. 672 Beam Clamp Safety Strap</p> |  <p>Art. 330 Sprinkler Loop Hanger</p> |  <p>Art. 320 Sprinkler Loop Hanger (European)</p> |
|  <p>Art. 340 Sprinkler Band Hanger</p> |  <p>Art. 300 Heavy Duty 2S Type</p> |  <p>Art. 307 Heavy Duty M16 Type</p> |  <p>Art. 620 Trapezoidal Sheet Hanger (W/O Knurled Nut)</p> |  <p>Art. 620 Trapezoidal Sheet Hanger (With Knurled Nut)</p> |
|  <p>Art. 620 Trapezoidal Sheet Hanger (With Knurled Nut)</p> |  <p>Art. 630 Trapezoidal Sheet Hanger (With Knurled Nut)</p> |  <p>Art. 630 Trapezoidal Sheet Hanger (With Nut)</p> |  <p>Art. 650 Toggle Plug</p> | |

Fixing Fasteners & Accessories

| | | | | |
|---|--|--|--|---|
|  <p>Art. 702 U-Bolt (DIN3570)</p> |  <p>Art. 700 U-Bolt</p> |  <p>Art. 720 Threaded Rod (DIN975)</p> |  <p>Art. 716 Threaded Pin (DIN975)</p> |  <p>Art. 712 Bolt Connector</p> |
|  <p>Art. 718 Threaded Pin (With Slot)</p> |  <p>Art. 714 Threaded Nipple</p> |  <p>Art. 704 Shoulder Screw</p> |  <p>Art. 710 Hanger Bolts With Torx Drive</p> |  <p>Art. 706 Threaded Pipe</p> |

Fixing Fasteners & Accessories

| | | | | |
|---|---|---|--|---|
|  |  |  |  |  |
| Art. 706 Threaded Pipe | Art. 760 Hexagonal Connector | Art. 761 Hexagonal Connector | Art. 765 Hexagonal Reducing Connector | Art. 762 Round Connector |
|  |  |  |  |  |
| Art. 768 Round Reducing Connector | Art. 763 Socket Reducer | Art. 902 Pendulum Hanger | Art. 902 Pendulum Hanger | Art. 732 Hexagon Nut (DIN934) |
|  |  |  |  |  |
| Art. 725 Flat Washer (DIN125A) | Art. 721 Flat Washer (DIN9021) | Art. 736 Flange Nut (DIN6923) | Art. 730 Knurled Nut | Art. 738 Multi-Connector |
|  |  |  |  |  |
| Art. 912 Parallel Rod Connector | Art. 749 Hexagon Wood Screw (DIN571) | Art. 746 Hexagon Head Bolt (DIN933) | Art. 757 Eye Bolt | Art. 758 Eye Screw (Male Threaded) |
|  |  |  |  |  |
| Art. 747 Eye Screw (Male Threaded) | Art. 747 Eye Screw (Male Threaded) | Art. 747 Eye Screw (Male Threaded) | Art. 611 Self-Drilling Screw (DIN7504K) | Art. 703 Impact Nail |
|  |  |  |  |  |
| Art. 705 Impact Nail Setting tool | Art. 740 Double Connector Plate | Art. 741 Double Wall Plate | Art. 780 Base Plate (With Nut) | Art. 782 Base Plate (With Combi-Nut) |

Fixing Fasteners & Accessories

| | | | | |
|---|---|--|--|---|
|  Art. 784 Base Plate (With Socket) |  Art. 786 Base Plate (With Socket) |  Art. 788 Base Plate (With Socket) |  Art. 767 Round Base Plate |  Art. 617 Perforated Fixing Strap (Straight-Edged) |
|  Art. 617 Perforated Fixing Strap (Wave-Edged) |  Art. 617 Perforated Fixing Strap (Wave-Edged) |  Art. 770 Drop-In Anchor |  Art. 772 Brass Wall Plug |  Art. 717 Claw Anchor |
|  Art. 748 Hollow Wall Anchor |  Art. 121 Plastic Plug |  Art. 123 Universal Plug |  Art. 790 Boiler Fixing Element |  Art. 792 Alluminium and Tubular Bracket |
|  Art. 794 Cast Iron and Steel Radiator Bracket |  Art. 796 Alluminium and Tubular Bracket |  Art. 798 Vertical W.C. Fixing |  Art. 799 Wash basin and Bidet wall Fixing |  Art. 783 Radiator Side Support |
|  Art. 785 Radiator Bottom Support |  Art. 771 Radiator Support (Set 1) |  Art. 781 Radiator Support (Set 2) | | |

Support Channels & Accessories

| | | | | |
|---|--|--|---|---|
|  Art. 500 Support C Channel |  Art. 500 Support C Channel |  Art. 500 Support C Channel (Double Welded) |  Art. 540 STRUT™ 41mm Series |  Art. 540 STRUT™ 41mm Series |
|  Art. 540 STRUT™ 41mm Series |  Art. 540 STRUT™ 27 & 41mm Series |  Art. 540 STRUT™ Double Welded |  Art. 540 STRUT™ Double Welded |  Art. 540 STRUT™ Double Welded |
|  Art. 518 Support U Channel |  Art. 519 Support L Channel |  Art. 400 Frame 80 Beam Section |  Art. 502 Cantilever Bracket (C Channel) |  Art. 502 Cantilever Bracket (C Channel) |
|  Art. 502 Cantilever Bracket (C Channel) |  Art. 541 Cantilever Bracket (41mm Strut) |  Art. 541 Cantilever Bracket (41mm Strut) |  Art. 541 Cantilever Bracket (41mm Strut) |  Art. 506 Cantilever Bracket (C Channel) |
|  Art. 506 Cantilever Bracket (C Channel) |  Art. 526 Cantilever Bracket (U Channel) |  Art. 528 Cantilever Arm (U Channel) |  Art. 407 Cantilever Bracket E80 |  Art. 408 Beam Bracket E80 |
|  Art. 507 Support Beam 45° |  Art. 507 Support Beam 45° |  Art. 410 Quick Nut (For C Channel) |  Art. 410 Quick Nut (For C Channel) |  Art. 430 Quick Nut (For C Channel) |

Support Channels & Accessories

| | | | | |
|---|---|---|---|---|
| <small>PATENTED MODEL</small> | <small>PATENTED MODEL</small> | <small>PATENTED MODEL</small> | <small>PATENTED MODEL</small> | <small>PATENTED MODEL</small> |
| Art. 430 Quick Nut (For C Channel) | Art. 420 Quick Nut (For Strut) | Art. 440 Quick Nut (For Strut) | Art. 412 Quick Nut (External Thread) | Art. 422 Quick Nut With Rod (External Thread) |
| <small>PATENTED MODEL</small> | <small>PATENTED MODEL</small> | | | |
| Art. 432 Quick Nut (External Thread) | Art. 442 Quick Nut (External Thread) | Art. 524 Slide T-Bolt Assembly | Art. 524 Slide T-Bolt Assembly | Art. 508 Sliding Nut (For C Channel) |
| | | | | |
| Art. 508 Sliding Nut (For Strut) | Art. 504 Spring Nut (With Extra Thread) | Art. 501 Spring Nut (For 41/21mm Strut) | Art. 503 Spring Nut (For 41/41mm Strut) | Art. 505 Spring Nut, Flat (For all 41mm Strut) |
| | | | | |
| Art. 509 U-Shaped Washer | Art. 509 U-Shaped Washer (Heavy Version) | Art. 512 Channel Connector (For C Channel) | Art. 516 Channel Connector (For C Channel) | Art. 516 Channel Connector (For Strut) |
| | | | | |
| Art. 539 Cross Connector (For C Channel) | Art. 539 Cross Connector (For C Channel) | Art. 513 Bracket (For C Channel) | Art. 513 Bracket (For C Channel) | Art. 517 Angle Bracket (For C Channel) |
| | | | | |
| Art. 517 Angle Bracket (For C Channel) | Art. 515 Angle Bracket (For C Channel) | Art. 515 Angle Bracket (For C Channel) | Art. 515 Angle Bracket (For C Channel) | Art. 530 Saddle Bracket (For C Channel) |

Support Channels & Accessories

| | | | | |
|--|--|---|---|--|
| | | | | |
| Art. 530 Saddle Bracket (For C Channel) | Art. 530 Saddle Bracket (For C Channel) | Art. 532 Support Bracket (For C Channel) | Art. 532 Support Bracket (For C Channel) | Art. 531 Mounting Angle (For C Channel) |
| | | | | |
| Art. 533 Mounting Angle (For C Channel) | Art. 533 Mounting Angle (For C Channel) | Art. 534 Mounting Angle (For C Channel) | Art. 534 Mounting Angle (For C Channel) | Art. 535 Connection Plate (For C Channel) |
| | | | | |
| Art. 535 Connection Plate (For C Channel) | Art. 535 Connection Plate (For C Channel) | Art. 537 Lateral Angle (For C Channel) | Art. 537 Lateral Angle (For C Channel) | Art. 537 Lateral Angle (For C Channel) |
| | | | | |
| Art. 536 Hinged Joint Support | Art. 525 U-Holder Beam Clamp | Art. 529 Channel Mounting Unit | Art. 511 Conduit Beam Clamp | Art. 514 Z Purlin Clip |
| | | | | |
| Art. 521 Swivel C Clamp | Art. 510 Channel End Plug (For C Channel) | Art. 510 Channel End Plug (For Strut) | Art. 416 End Cap (For 80 Beam Sections) | Art. 522 Channel Cover (For 41mm Strut) |
| | | | | |
| Art. 600 Insulation Profile (For C Channel) | Art. 600 Insulation Profile (For Strut) | Art. 616 Sound Insulator | Art. 616 Sound Insulator | Art. 523 Gas Meter Support Kits |

Support Channels & Accessories



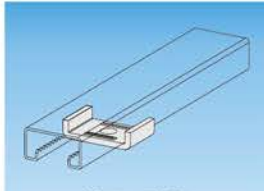
Art. 523
Gas Meter Support Kits



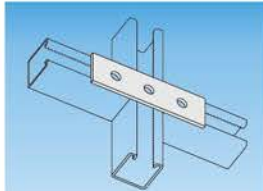
Art. 527
Air-Conditioning Support Kits



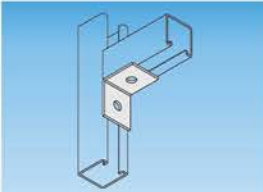
Art. 538
Bracket Set for Air Conditioner



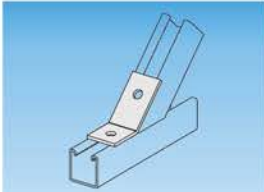
Art. 509
U-Shapped Washer (For Strut)



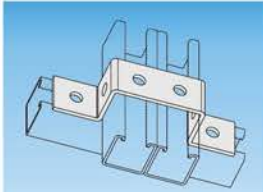
Art.542-Art.553
Flat Fittings



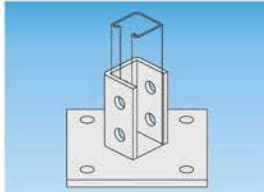
Art.554-Art.564
Angle Fittings 90°



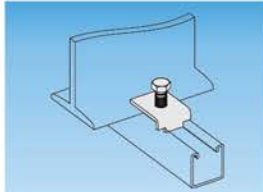
Art.565-Art.569
Angle Fittings



Art.570-Art.579
U & Z Fittings



Art.580-Art.591
Base & Wing Fittings



Art.592-Art.599
Beam Clamps

Art. 261

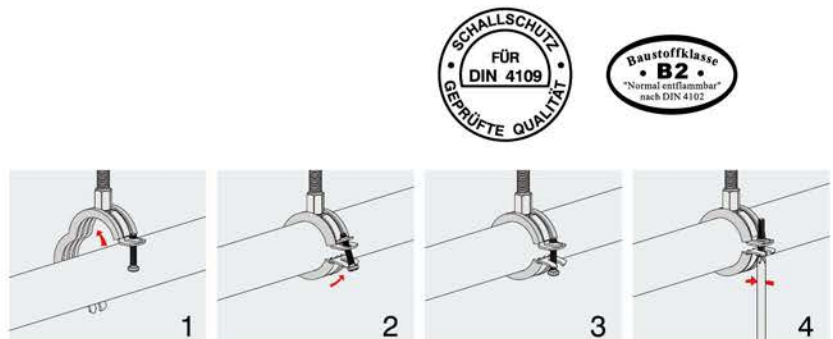
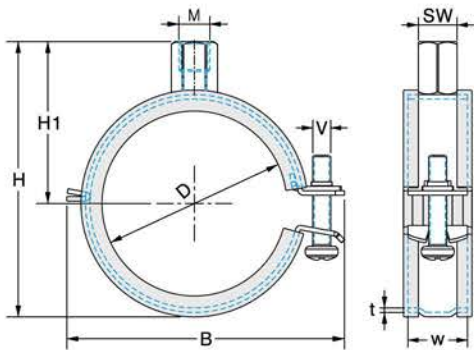
Hinged Pipe Clamp W/ Lining, Classic Type (III)

Advantages/Benefits

- Suitable for fixing of drinking and heating water pipe lines.
- **Economy type designed by cost saving material system.**
- Snap tongue can freely swing by very wide angle.
- Hinged pipe clamp can open wide for easy insertion of the pipe.
- Secure stop points on top of the screw prevent the screw from falling down during the installation works.
- Time and energy saving insertion of the pipe in overhead installation.
- Strong sound insulation insert for firm fit.

Technical Data

- Material: Steel 1.0332 acc. to DIN EN 10111
- Zinc plating: Electro zinc plated, 8–12 µm
- Sound absorption lining: EPDM; chlorine-free; silicone-free
- Noise reduction: According to DIN 4109
- Temperature resistance: -50°C to +110°C
- EPDM hardness: 45° +/- 5° Shore-A
- Fire behaviour: Class B2 according to DIN 4102



| Article Number | Clamping Range | | Connecting Thread | Dimensions [mm] | | | | | | Pack Size [pcs] | Max. Rec. Load [N] |
|----------------|----------------|--------|-------------------|-----------------|-----|-----|----|----|-------|-----------------|--------------------|
| | D [mm] | [inch] | | w x t | B | H | H1 | SW | V | | |
| 1218 261 012 | 12-14 | 1/4 | M8/M10 | 20x1.5 | 46 | 43 | 30 | 13 | M5x25 | 150 | 1200 |
| 1218 261 015 | 15-19 | 3/8 | M8/M10 | 20x1.5 | 50 | 48 | 32 | 13 | M5x25 | 150 | 1200 |
| 1218 261 021 | 21-23 | 1/2 | M8/M10 | 20x1.5 | 55 | 52 | 34 | 13 | M5x25 | 100 | 1200 |
| 1218 261 026 | 26-28 | 3/4 | M8/M10 | 20x1.5 | 60 | 57 | 37 | 13 | M5x25 | 100 | 1200 |
| 1218 261 032 | 32-35 | 1 | M8/M10 | 20x1.5 | 67 | 64 | 40 | 13 | M5x25 | 100 | 1200 |
| 1218 261 040 | 40-43 | 1-1/4 | M8/M10 | 20x1.5 | 75 | 72 | 44 | 13 | M5x25 | 50 | 1200 |
| 1218 261 048 | 48-51 | 1-1/2 | M8/M10 | 20x1.5 | 84 | 80 | 48 | 13 | M5x30 | 50 | 1200 |
| 1218 261 052 | 52-56 | 2 | M8/M10 | 20x1.5 | 91 | 85 | 51 | 13 | M5x30 | 50 | 1200 |
| 1218 261 057 | 57-61 | - | M8/M10 | 20x1.5 | 93 | 90 | 53 | 13 | M5x30 | 50 | 1200 |
| 1218 261 063 | 63-67 | - | M8/M10 | 20x1.5 | 99 | 96 | 56 | 13 | M5x30 | 50 | 1200 |
| 1218 261 074 | 74-80 | 2-1/2 | M8/M10 | 20x1.5 | 112 | 109 | 63 | 13 | M5x30 | 50 | 1200 |
| 1218 261 083 | 83-91 | 3 | M8/M10 | 20x1.5 | 123 | 120 | 68 | 13 | M5x30 | 50 | 1200 |
| 1218 261 100 | 100-105 | - | M8/M10 | 23x2.0 | 141 | 135 | 76 | 13 | M6x35 | 25 | 1800 |
| 1218 261 108 | 108-114 | 4 | M8/M10 | 23x2.0 | 150 | 144 | 80 | 13 | M6x35 | 25 | 1800 |

Art. 272

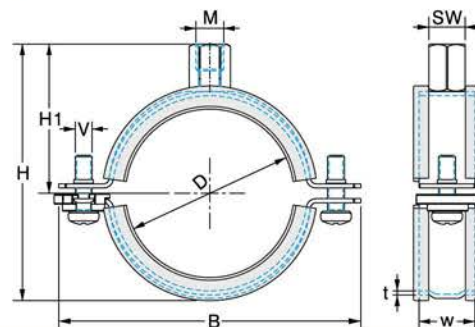
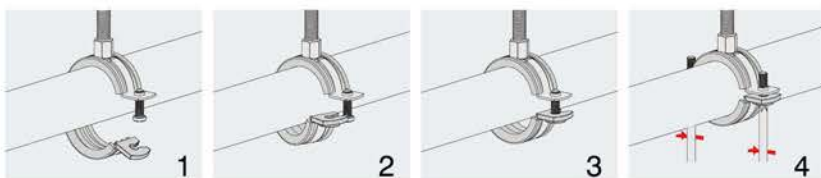
Two Screws Pipe Clamp W/ Lining, **EZLock™** Type (II)

Advantages/Benefits

- **Aimcofix patented model.**
- Suitable for fixing of drinking and heating water pipe lines.
- Snap closure with **special "click-function"** to prevent lower half part of clamp from falling upper half part during the installation.
- **Special designed "round stop-edge" to secure the screw in safety lock position without sliding out after the screw fastened.**
- Wide opening of the clamp due to the swivelling ability of the lower clamp half.
- Strong sound insulation insert for firm fit.

Technical Data

- Material: Steel 1.0332 acc. to DIN EN 10111
- Zinc plating: Electro zinc plated, 8–12 µm
- Sound absorption lining: EPDM; chlorine-free; silicone-free
- Noise reduction: According to DIN 4109
- Temperature resistance: -50°C to +110°C
- EPDM hardness: 45° +/- 5° Shore-A
- Fire behaviour: Class B2 according to DIN 4102



| Article Number | Clamping Range | | Connecting Thread | Dimensions [mm] | | | | | | Pack Size [pcs] | Max. Rec. Load [N] |
|----------------|----------------|--------|-------------------|-----------------|-----|-----|-----|----|-------|-----------------|--------------------|
| | D[mm] | [inch] | | w x t | B | H | H1 | SW | V | | |
| 1218 272 012 | 12-14 | 1/4 | M8 | 20x1.2 | 56 | 33 | 20 | 13 | M5x16 | 150 | 1000 |
| 1218 272 015 | 15-19 | 3/8 | M8 | 20x1.2 | 61 | 37 | 22 | 13 | M5x16 | 150 | 1000 |
| 1218 272 020 | 20-23 | 1/2 | M8 | 20x1.2 | 65 | 41 | 24 | 13 | M5x16 | 100 | 1000 |
| 1218 272 025 | 25-28 | 3/4 | M8 | 20x1.2 | 71 | 46 | 27 | 13 | M5x16 | 100 | 1000 |
| 1218 272 032 | 32-35 | 1 | M8 | 20x1.2 | 78 | 53 | 30 | 13 | M5x16 | 100 | 1000 |
| 1218 272 040 | 40-43 | 1-1/4 | M8 | 20x1.2 | 86 | 62 | 35 | 13 | M5x20 | 50 | 1000 |
| 1218 272 044 | 44-49 | 1-1/2 | M8 | 20x1.2 | 92 | 68 | 38 | 13 | M5x20 | 50 | 1000 |
| 1218 272 050 | 50-56 | – | M8/M10 | 20x1.5 | 103 | 87 | 52 | 13 | M6x20 | 50 | 1200 |
| 1218 272 057 | 57-61 | 2 | M8/M10 | 20x1.5 | 108 | 92 | 54 | 13 | M6x20 | 50 | 1200 |
| 1218 272 063 | 63-67 | – | M8/M10 | 20x1.5 | 114 | 98 | 57 | 13 | M6x20 | 50 | 1200 |
| 1218 272 070 | 70-73 | – | M8/M10 | 20x1.5 | 121 | 104 | 60 | 13 | M6x20 | 50 | 1200 |
| 1218 272 074 | 74-80 | 2-1/2 | M8/M10 | 20x1.5 | 127 | 111 | 64 | 13 | M6x20 | 50 | 1200 |
| 1218 272 083 | 83-91 | 3 | M8/M10 | 20x1.5 | 138 | 122 | 69 | 13 | M6x20 | 50 | 1200 |
| 1218 272 101 | 101-106 | – | M8/M10 | 25x2.0 | 162 | 140 | 78 | 13 | M8x25 | 25 | 2100 |
| 1218 272 108 | 108-114 | 4 | M8/M10 | 25x2.0 | 170 | 148 | 82 | 13 | M8x25 | 25 | 2100 |
| 1218 272 125 | 125 | – | M8/M10 | 25x2.0 | 182 | 159 | 88 | 13 | M8x25 | 25 | 2100 |
| 1218 272 131 | 131-135 | – | M8/M10 | 25x2.0 | 192 | 169 | 93 | 13 | M8x25 | 25 | 2100 |
| 1218 272 136 | 136-139 | – | M8/M10 | 25x2.0 | 196 | 173 | 95 | 13 | M8x25 | 25 | 2100 |
| 1218 272 140 | 140-144 | 5 | M8/M10 | 25x2.0 | 201 | 178 | 97 | 13 | M8x25 | 25 | 2100 |
| 1218 272 159 | 159-163 | – | M8/M10 | 25x2.0 | 220 | 197 | 107 | 13 | M8x25 | 20 | 2100 |
| 1218 272 165 | 165-169 | 6 | M8/M10 | 25x2.0 | 226 | 203 | 110 | 13 | M8x25 | 20 | 2100 |
| 1218 272 193 | 193-200 | – | M8/M10 | 25x3.0 | 257 | 236 | 127 | 17 | M8X30 | 10 | 2800 |
| 1218 272 210 | 210-212 | – | M8/M10 | 25x3.0 | 269 | 248 | 133 | 17 | M8X30 | 10 | 2800 |
| 1218 272 216 | 216-220 | 8 | M8/M10 | 25x3.0 | 277 | 256 | 137 | 17 | M8X30 | 10 | 2800 |

Art. 330

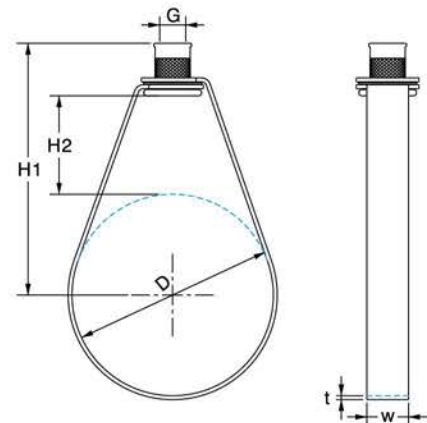
Sprinkler Loop Hanger, With Knurled Nut

Advantages/Benefits

- Approved for the fixing of sprinkler systems by FM and UL certifications.
- **Designed for suspending insulated pipe (with shield) or non-insulated pipe allowing for vertical adjustment.**
- One-piece design allows quick and easy installation of sprinkler pipes.
- Ideal for suspension using threaded pins and threaded rods.
- Simple height adjustment using the knurled nut.

Technical Data

- Material: Steel 1.0332 acc. to DIN EN 10111
- Zinc plating: Pre-galvanised acc. to DIN EN 10327
- Connection: Knurled nut



Loading Data

| Size | Max. Recommended Load [N] |
|-----------|---------------------------|
| 1/2"-2" | 1800 |
| 2-1/2"-4" | 2700 |
| 6" | 4500 |
| 8" | 5600 |

| Article Number | Clamping Range | | | Dimensions [mm] | | | | UL Approved | FM Approved | Pack Size [pcs] |
|----------------|----------------|-------|--------|-----------------|-----|-----|----|-------------|-------------|-----------------|
| | DN | D[mm] | [inch] | w x t | G | H1 | H2 | | | |
| 0906 330 001 | 15 | 21.3 | 1/2 | 16x1.2 | M10 | 62 | 29 | ● | — | 100 |
| 0906 330 002 | 20 | 26.9 | 3/4 | 16x1.2 | M10 | 63 | 27 | ● | ● | 100 |
| 0906 330 003 | 25 | 33.7 | 1 | 16x1.2 | M10 | 67 | 28 | ● | ● | 100 |
| 0906 330 004 | 32 | 42.4 | 1-1/4 | 16x1.2 | M10 | 71 | 27 | ● | ● | 100 |
| 0906 330 005 | 40 | 48.3 | 1-1/2 | 16x1.2 | M10 | 76 | 30 | ● | ● | 100 |
| 0906 330 006 | 50 | 60.3 | 2 | 16x1.2 | M10 | 78 | 26 | ● | ● | 100 |
| 0906 330 007 | 65 | 76.1 | 2-1/2 | 19x2.0 | M10 | 99 | 38 | ● | ● | 50 |
| 0906 330 008 | 80 | 88.9 | 3 | 19x2.0 | M10 | 117 | 50 | ● | ● | 50 |
| 0906 330 009 | 100 | 114.3 | 4 | 19x2.0 | M10 | 131 | 51 | ● | ● | 50 |
| 0906 330 010 | 125 | 139.7 | 5 | 19x2.5 | M12 | 155 | 55 | ● | ● | 25 |
| 0906 330 011 | 150 | 168.3 | 6 | 19x2.5 | M12 | 196 | 84 | ● | ● | 25 |
| 0906 330 012 | 200 | 219.1 | 8 | 23x3.0 | M12 | 203 | 66 | ● | ● | 25 |

Art. 320

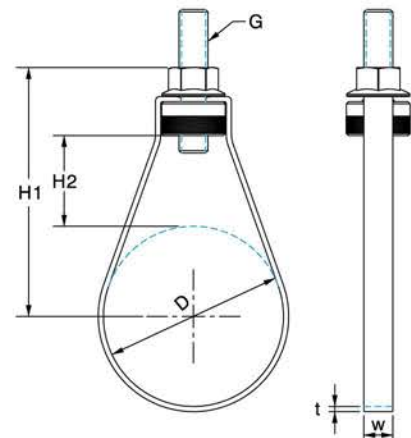
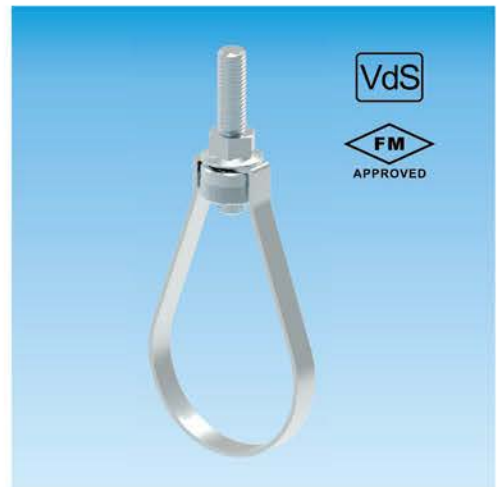
Sprinkler Loop Hanger, European Type

Advantages/Benefits

- For stationary fire protection in fixed water-based fire extinguishing systems - primarily in sprinkler system construction.
- Spray-water fire extinguishing systems.
- CO₂ fire extinguishing systems.
- Halon fire extinguishing systems.
- Foam fire extinguishing systems.
- Powder fire extinguishing systems.

Technical Data

- Material: Steel 1.0332 acc. to DIN EN 10111
- Zinc plating: Electro zinc plated, ≥13µm
- Connection: Flanged nut according to DIN1661



| Loading Data | |
|--------------|---------------------------|
| Size | Max. Recommended Load [N] |
| 3/4" - 2" | 2,000 |
| 2-1/2" - 4" | 3,500 |
| 133.0mm - 6" | 5,000 |
| 8" | 8,500 |

| Article Number | Clamping Range | | | Dimensions [mm] | | | | VdS Approved | FM Approved | Pack Size [pcs] |
|----------------|----------------|-------|--------|-----------------|-----|-----|----|--------------|-------------|-----------------|
| | DN | D[mm] | [inch] | w x t | G | H1 | H2 | | | |
| 0906 320 001 | 20 | 26.9 | 3/4 | 12x1.5 | M8 | 56 | 18 | ● | — | 50 |
| 0906 320 002 | 25 | 33.7 | 1 | 12x1.5 | M8 | 61 | 19 | ● | — | 50 |
| 0906 320 003 | 25 | 33.7 | 1 | 12x1.5 | M10 | 63 | 16 | ● | ● | 50 |
| 0906 320 004 | 32 | 42.4 | 1-1/4 | 12x1.5 | M8 | 66 | 20 | ● | — | 50 |
| 0906 320 005 | 32 | 42.4 | 1-1/4 | 12x1.5 | M10 | 68 | 17 | ● | ● | 50 |
| 0906 320 006 | 40 | 48.3 | 1-1/2 | 12x1.5 | M8 | 71 | 22 | ● | — | 50 |
| 0906 320 007 | 40 | 48.3 | 1-1/2 | 12x1.5 | M10 | 73 | 19 | ● | ● | 50 |
| 0906 320 008 | 50 | 60.3 | 2 | 12x1.5 | M8 | 80 | 25 | ● | — | 50 |
| 0906 320 009 | 50 | 60.3 | 2 | 12x1.5 | M10 | 82 | 22 | ● | ● | 50 |
| 0906 320 010 | 65 | 76.1 | 2-1/2 | 15x2.5 | M10 | 99 | 30 | ● | ● | 25 |
| 0906 320 011 | 80 | 88.9 | 3 | 15x2.5 | M10 | 114 | 39 | ● | ● | 25 |
| 0906 320 012 | — | 108.0 | — | 15x2.5 | M10 | 144 | 59 | ● | — | 25 |
| 0906 320 013 | 100 | 114.3 | 4 | 15x2.5 | M10 | 144 | 56 | ● | ● | 25 |
| 0906 320 014 | — | 133.0 | — | 15x2.5 | M12 | 154 | 51 | ● | — | 25 |
| 0906 320 015 | 125 | 139.7 | 5 | 15x2.5 | M12 | 161 | 55 | ● | ● | 25 |
| 0906 320 016 | — | 159.0 | — | 15x2.5 | M12 | 189 | 73 | ● | — | 25 |
| 0906 320 017 | 150 | 168.3 | 6 | 15x2.5 | M12 | 189 | 68 | ● | ● | 25 |
| 0906 320 018 | 200 | 219.1 | 8 | 25x2.5 | M16 | 241 | 83 | ● | ● | 10 |

Art. 300

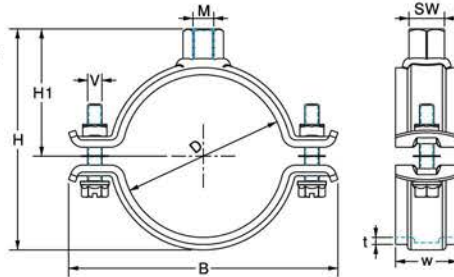
Two Screws Pipe Clamp W/O Lining, Heavy Duty Type

Advantages/Benefits

- Aimcofix patented model.
- For the installation of pipes required for M&E Services and in plant constructions.
- Pipe support for heavy duty loads purpose.
- Stronger fastening latches for high load capacity.
- High-strength welding all around the connecting nut.
- CO₂ welding for size up from 176-184mm.

Technical Data

- Material:
Steel 1.0332 acc. to DIN EN 10111
- Zinc plating:
Electro zinc plated, ≥ 13µm



| Article Number | Clamping Range D [mm] | Clamping Range [inch] | Connecting Thread | Dimensions [mm] | | | | | | Approvals | | Pack Size [pcs] | Max. Rec. Load [N] |
|----------------|--------------------------|--------------------------|----------------------|-----------------|-----|-----|-----|----|--------|-----------|----|--------------------|-----------------------|
| | | | | w x t | B | H | H1 | SW | V | VdS | FM | | |
| 0906 300 015 | 15-19 | 3/8 | M8 | 30x2.5 | 60 | 37 | 23 | 17 | M8x30 | — | — | 50 | 2500 |
| 0906 300 020 | 20-24 | 1/2 | M8 | 30x2.5 | 66 | 42 | 25 | 17 | M8x30 | ● | — | 50 | 2500 |
| 0906 300 025 | 25-30 | 3/4 | M8 | 30x2.5 | 71 | 50 | 29 | 17 | M8x30 | ● | — | 50 | 2500 |
| 0906 300 031 | 31-35 | 1 | M8 | 30x2.5 | 77 | 55 | 31 | 17 | M8x30 | ● | — | 50 | 2500 |
| 0906 300 036 | 36-41 | — | M8 | 30x2.5 | 83 | 61 | 34 | 17 | M8x30 | ● | — | 50 | 2500 |
| 0906 300 040 | 40-45 | 1-1/4 | M8 | 30x2.5 | 88 | 65 | 36 | 17 | M8x30 | ● | — | 50 | 2500 |
| 0906 300 048 | 48-53 | 1-1/2 | M8 | 30x2.5 | 96 | 73 | 40 | 17 | M8x30 | ● | — | 50 | 2500 |
| 0906 300 017 | 15-19 | 3/8 | M10 | 30x2.5 | 60 | 39 | 25 | 17 | M8x30 | — | — | 50 | 2500 |
| 0906 300 022 | 20-24 | 1/2 | M10 | 30x2.5 | 66 | 44 | 27 | 17 | M8x30 | — | — | 50 | 2500 |
| 0906 300 027 | 25-30 | 3/4 | M10 | 30x2.5 | 71 | 52 | 31 | 17 | M8x30 | — | ● | 50 | 2500 |
| 0906 300 034 | 31-35 | 1 | M10 | 30x2.5 | 77 | 57 | 33 | 17 | M8x30 | — | ● | 50 | 2500 |
| 0906 300 038 | 36-41 | — | M10 | 30x2.5 | 83 | 63 | 36 | 17 | M8x30 | — | — | 50 | 2500 |
| 0906 300 043 | 40-45 | 1-1/4 | M10 | 30x2.5 | 88 | 67 | 38 | 17 | M8x30 | — | ● | 50 | 2500 |
| 0906 300 050 | 48-53 | 1-1/2 | M10 | 30x2.5 | 96 | 75 | 42 | 17 | M8x30 | — | ● | 50 | 2500 |
| 0906 300 054 | 54-59 | — | M10 | 30x2.5 | 102 | 81 | 45 | 17 | M8x30 | ● | — | 50 | 2500 |
| 0906 300 060 | 60-65 | 2 | M10 | 30x2.5 | 108 | 87 | 48 | 17 | M8x30 | ● | ● | 50 | 2500 |
| 0906 300 067 | 67-72 | — | M10 | 30x2.5 | 115 | 94 | 52 | 17 | M8x30 | ● | — | 50 | 2500 |
| 0906 300 076 | 76-81 | 2-1/2 | M10 | 30x3.0 | 135 | 105 | 58 | 17 | M8x40 | ● | ● | 25 | 3500 |
| 0906 300 082 | 82-87 | — | M10 | 30x3.0 | 141 | 111 | 61 | 17 | M8x40 | ● | — | 25 | 3500 |
| 0906 300 088 | 88-93 | 3 | M10 | 30x3.0 | 147 | 117 | 64 | 17 | M8x40 | ● | ● | 25 | 3500 |
| 0906 300 102 | 102-108 | — | M12 | 30x3.0 | 163 | 132 | 71 | 19 | M8x40 | ● | — | 25 | 3500 |
| 0906 300 110 | 110-116 | 4 | M10 | 30x3.0 | 171 | 140 | 75 | 17 | M8x40 | — | ● | 25 | 3500 |
| 0906 300 114 | 110-116 | 4 | M12 | 30x3.0 | 171 | 140 | 75 | 19 | M8x40 | ● | ● | 25 | 3500 |
| 0906 300 117 | 117-124 | — | M12 | 30x3.0 | 179 | 148 | 79 | 19 | M8x40 | ● | — | 25 | 3500 |
| 0906 300 124 | 124-129 | — | M12 | 30x3.0 | 184 | 153 | 82 | 19 | M8x40 | ● | — | 25 | 3500 |
| 0906 300 133 | 133-140 | — | M12 | 40x4.0 | 208 | 160 | 85 | 19 | M12x45 | ● | — | 10 | 5000 |
| 0906 300 140 | 140-148 | 5 | M12 | 40x4.0 | 216 | 168 | 89 | 19 | M12x45 | ● | ● | 10 | 5000 |
| 0906 300 149 | 149-155 | — | M16 | 40x4.0 | 223 | 178 | 96 | 24 | M12x45 | ● | — | 10 | 5000 |
| 0906 300 159 | 159-165 | — | M16 | 40x4.0 | 234 | 188 | 101 | 24 | M12x45 | ● | — | 10 | 5000 |
| 0906 300 167 | 167-173 | 6 | M12 | 40x4.0 | 242 | 193 | 102 | 19 | M12x45 | — | ● | 10 | 5000 |
| 0906 300 168 | 167-173 | 6 | M16 | 40x4.0 | 242 | 196 | 105 | 24 | M12x45 | ● | ● | 10 | 5000 |
| 0906 300 176 | 176-184 | — | M16 | 40x4.0 | 253 | 207 | 110 | 24 | M12x45 | — | — | 10 | 10000 |
| 0906 300 188 | 188-194 | — | M16 | 40x4.0 | 263 | 217 | 115 | 24 | M12x45 | — | — | 10 | 10000 |
| 0906 300 199 | 199-205 | — | M16 | 40x4.0 | 274 | 228 | 121 | 24 | M12x45 | — | — | 10 | 10000 |
| 0906 300 207 | 207-216 | — | M16 | 40x4.0 | 285 | 239 | 126 | 24 | M12x45 | — | — | 10 | 10000 |
| 0906 300 219 | 219-225 | 8 | M16 | 40x4.0 | 294 | 248 | 131 | 24 | M12x45 | — | — | 10 | 10000 |
| 0906 300 227 | 227-236 | — | M16 | 40x4.0 | 305 | 259 | 136 | 24 | M12x45 | — | — | 10 | 10000 |
| 0906 300 244 | 244-250 | — | M16 | 40x4.0 | 319 | 273 | 143 | 24 | M12x45 | — | — | 10 | 10000 |
| 0906 300 251 | 251-261 | — | M16 | 40x4.0 | 330 | 284 | 149 | 24 | M12x45 | — | — | 10 | 10000 |
| 0906 300 267 | 267-273 | 10 | M16 | 40x4.0 | 343 | 296 | 155 | 24 | M12x45 | — | — | 10 | 10000 |
| 0906 300 278 | 278-284 | — | M16 | 40x4.0 | 354 | 307 | 160 | 24 | M12x45 | — | — | 10 | 10000 |
| 0906 300 297 | 297-303 | — | M16 | 40x4.0 | 373 | 326 | 170 | 24 | M12x45 | — | — | 10 | 10000 |

Art. 670

Beam Clamp, Electro-Galvanised

Advantages/Benefits

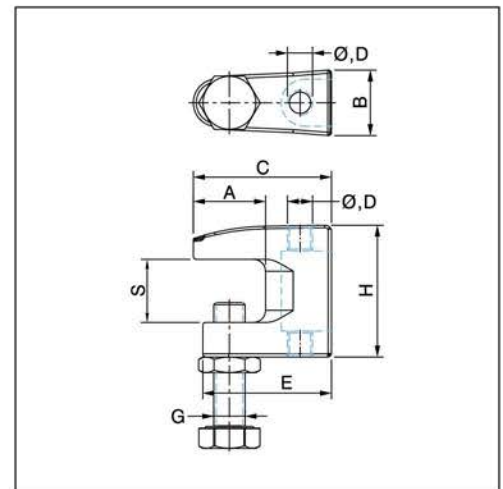
- Proudly designed and manufactured by Aimcofix with VdS and FM approval certifications.
- For fixing pipe works, air ducts and sprinkler systems to steel girders.
- Fastening on steel girder without welding and drilling.
- The simplest, quickest and most cost-effective method of suspending building services from steel beams.
- High load-bearing capacity due to smart design of reinforcement rib.
- Suitable for use with parallel or tapered flange beams.
- Level adjustment is also possible later with through-hole.
- No slipping of the clamp from steel girder.

Technical Data

- Material: Malleable cast iron EN-GJMB-350-10 acc. to DIN 1562.
- Zinc plating: Electro zinc plated, 8–12 µm
- Fastening bolt: Hexagonal bolt DIN 933.8.8, bolt end with cup point acc. To EN ISO 4753 and lock nut

Note

- For type PH16, thread M10 or M12 and clear holes 13 is available on customer's special request.
- Beam clamps can generally be secured by safety strips, safety steel strip must be fitted according to VdS certification, when fastening pipe greater than DN65.



Loading Data

| For Type | Max. Rec. Load [N] |
|------------|--------------------|
| PHK8 | 1200 |
| PH10,PHK10 | 2500 |
| PH12 | 3500 |
| PH16 | 5000 |

| Article Number | Type | Clamping Range S [mm] | Size of Clearance | | Set Screw G | Dimensions [mm] | | | | | Approvals | | [pcs] |
|----------------|-------|-----------------------|-------------------|---------------|-------------|-----------------|----|----|----|----|-----------|----|-------|
| | | | Hole Ø [mm] | Thread D [mm] | | A | B | C | E | H | VdS | FM | |
| 0802 670 001 | PHK8 | 0-18 | — | M8 | M8 | 21 | 19 | 38 | 35 | 35 | ● | — | 50 |
| 0802 670 002 | PHK8 | 0-18 | 9 | — | M8 | 21 | 19 | 38 | 35 | 35 | ● | — | 50 |
| 0802 670 003 | PH10 | 0-20 | — | M8 | M10 | 29 | 21 | 50 | 41 | 45 | ● | — | 50 |
| 0802 670 004 | PH10 | 0-20 | 9 | — | M10 | 29 | 21 | 50 | 41 | 45 | ● | — | 50 |
| 0802 670 005 | PHK10 | 0-20 | — | M10 | M10 | 23 | 21 | 44 | 41 | 42 | ● | ● | 50 |
| 0802 670 006 | PHK10 | 0-20 | 11 | — | M10 | 23 | 21 | 44 | 41 | 42 | ● | ● | 50 |
| 0802 670 007 | PH12 | 0-26 | — | M12 | M10 | 35 | 24 | 58 | 48 | 54 | ● | ● | 50 |
| 0802 670 008 | PH12 | 0-26 | 13 | — | M10 | 35 | 24 | 58 | 48 | 54 | ● | ● | 50 |
| 0802 670 009 | PH16 | 0-26 | — | M16 | M12 | 30 | 30 | 58 | 55 | 58 | ● | ● | 50 |
| 0802 670 010 | PH16 | 0-26 | 17 | — | M12 | 30 | 30 | 58 | 55 | 58 | ● | ● | 50 |

Art. 680

Steel Beam Clamp, Electro-Galvanised

Advantages/Benefits

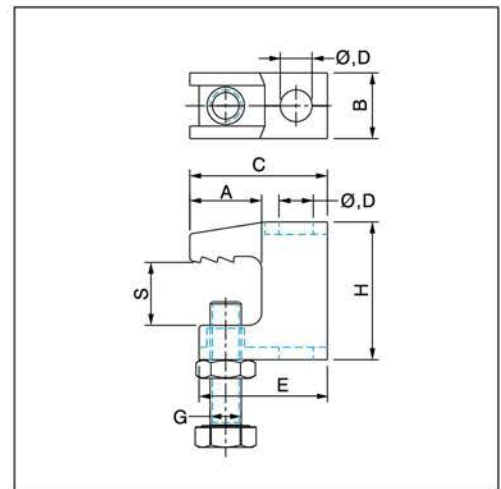
- Proudly designed and manufactured by Aimcofix with VdS and FM approval certifications.
- Advantage by service of stainless steel AISI 316 (INOX A4).
- For fixing pipe works, air ducts and sprinkler systems to steel girders.
- Fastening on steel girder without welding and drilling.
- The simplest, quickest and most cost-effective method of suspending building services from steel beams.
- High load-bearing capacity due to smart design of reinforcement rib.
- Suitable for use with parallel or tapered flange beams.
- Level adjustment is also possible later with through-hole.
- No slipping of the clamp from steel girder.

Technical Data

- Material: Steel 1.0332 acc. to DIN EN 10111, or AISI 316 (INOX A4).
- Zinc plating: Electro zinc plated, 8–12 µm
- Fastening bolt: Hexagonal bolt DIN 933.8.8, bolt end with cup point acc. To EN ISO 4753 and lock nut

Note

- For type PK16, thread M10 or M12 and clear holes 13 is available on customer's special request.
- Beam clamps can generally be secured by safety strips, safety steel strip must be fitted according to VdS certification, when fastening pipe greater than DN65.



Loading Data

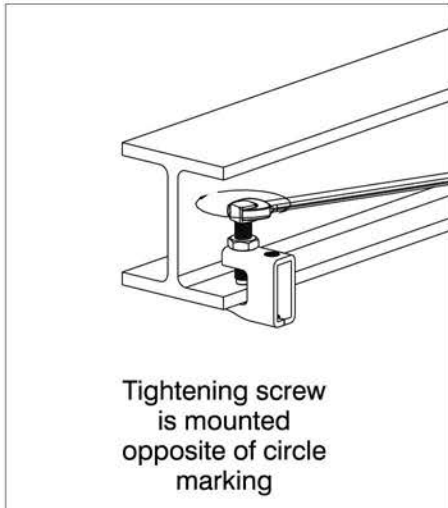
| For Type | Max. Rec. Load [N] |
|------------|--------------------|
| PKB8 | 1200 |
| PK10,PKB10 | 2500 |
| PK12 | 3500 |
| PK16 | 5000 |

| Article Number | Type | Clamping Range S [mm] | Size of Clearance | | Set Screw G | Dimensions [mm] | | | | | Approvals | | [pcs] |
|----------------|-------|-----------------------|-------------------|---------------|-------------|-----------------|----|----|----|----|-----------|----|-------|
| | | | Hole Ø [mm] | Thread D [mm] | | A | B | C | E | H | VdS | FM | |
| 0802 680 001 | PKB8 | 0-18 | – | M8 | M8 | 21 | 19 | 38 | 35 | 37 | ● | – | 50 |
| 0802 680 002 | PKB8 | 0-18 | 9 | – | M8 | 21 | 19 | 38 | 35 | 37 | ● | – | 50 |
| 0802 680 003 | PK10 | 0-20 | – | M8 | M10 | 29 | 21 | 50 | 41 | 47 | ● | – | 50 |
| 0802 680 004 | PK10 | 0-20 | 9 | – | M10 | 29 | 21 | 50 | 41 | 47 | ● | – | 50 |
| 0802 680 005 | PKB10 | 0-20 | – | M10 | M10 | 23 | 21 | 44 | 41 | 44 | ● | ● | 50 |
| 0802 680 006 | PKB10 | 0-20 | 11 | – | M10 | 23 | 21 | 44 | 41 | 44 | ● | ● | 50 |
| 0802 680 007 | PK12 | 0-26 | – | M12 | M10 | 35 | 23 | 58 | 48 | 56 | ● | ● | 50 |
| 0802 680 008 | PK12 | 0-26 | 13 | – | M10 | 35 | 23 | 58 | 48 | 56 | ● | ● | 50 |
| 0802 680 009 | PK16 | 0-26 | – | M16 | M12 | 30 | 27 | 58 | 55 | 60 | ● | ● | 50 |
| 0802 680 010 | PK16 | 0-26 | 17 | – | M12 | 30 | 27 | 58 | 55 | 60 | ● | ● | 50 |

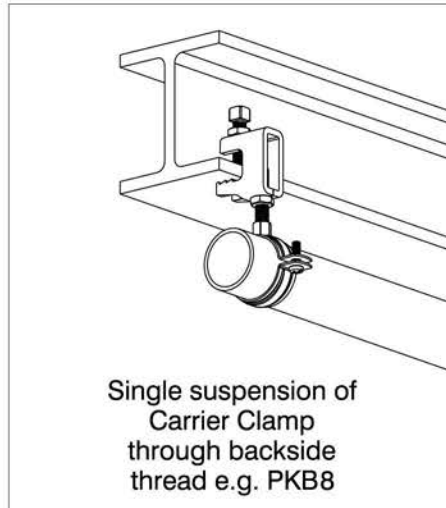
Art. 670 & Art. 680

Beam Clamp, Electro-Galvanised

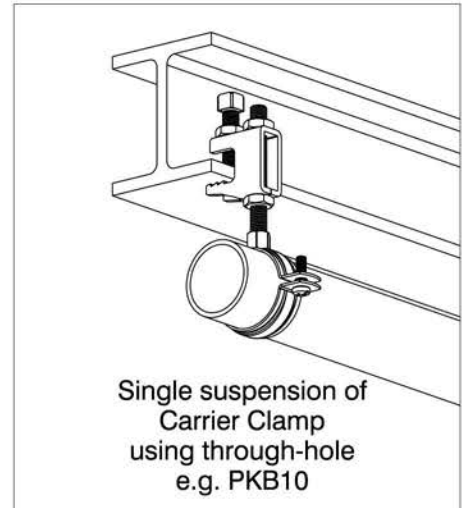
Mounting Instructions Beam Clamp PH & PHK



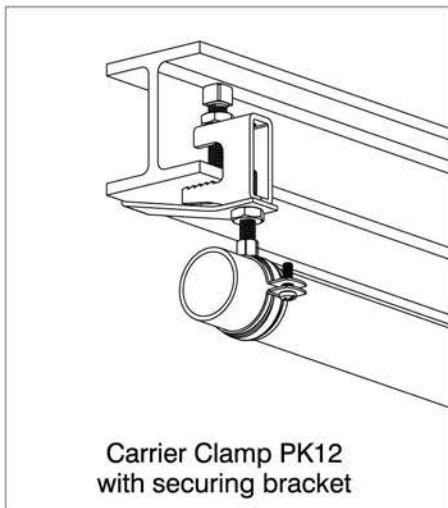
Tightening screw is mounted opposite of circle marking



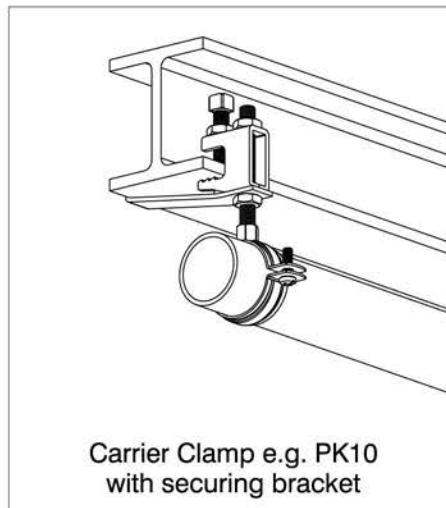
Single suspension of Carrier Clamp through backside thread e.g. PKB8



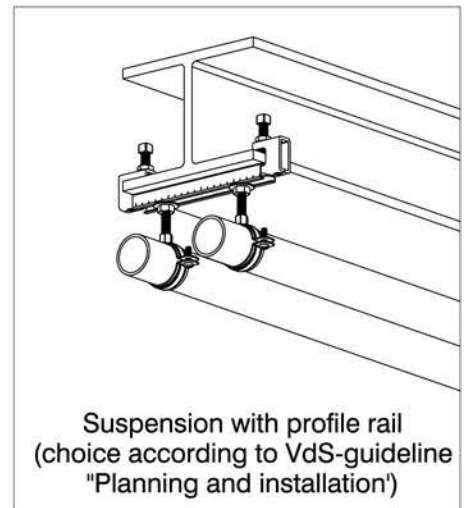
Single suspension of Carrier Clamp using through-hole e.g. PKB10



Carrier Clamp PK12 with securing bracket



Carrier Clamp e.g. PK10 with securing bracket



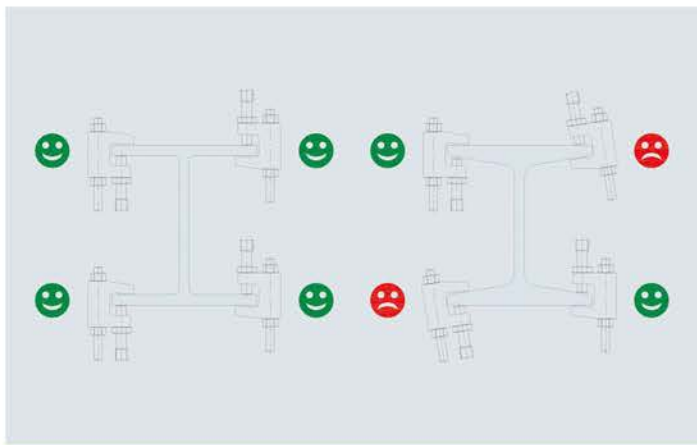
Suspension with profile rail (choice according to VdS-guideline "Planning and installation")

For stationary sprinkler systems pipe size greater than DN 50 according to VdS, Beam clamps have to be installed with safety steel strip.

Pipe Dimension DN (mm)
 Below DN 50
 From DN 50 to DN100
 From DN100 to DN150

Afix Beam Clamp
 PHK8, PKB8
 PH10, PHK10, PK10, PKB10
 PH12, PH16, PK12, PK16

Safety Steel Strip
 Required
 Required



Installation Tips:

- Slide Afix Beam Clamp onto beam flange and tighten set screw to recommended torque. To avoid over tightening, a rough guide to achieve the correct torque is to tighten the setscrew with thumb and forefinger and then apply a further quarter turn (90°) with a spanner.
- Tighten the locknut to the recommended torque.
- When used with taper flanges, it is important to ensure that the screw of the Afix Beam clamp bites into the tapered face of the flange, rather than the parallel underside.

Art. 620

Trapezoidal Sheet Hanger, Electro-Galvanised

Advantages/Benefits

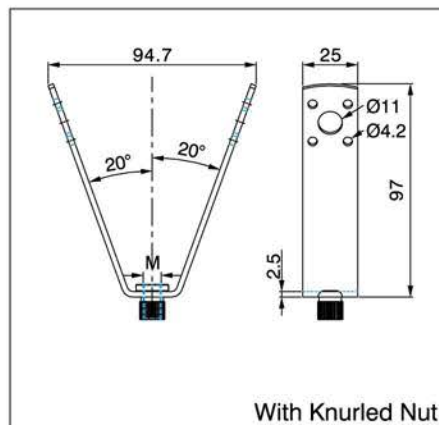
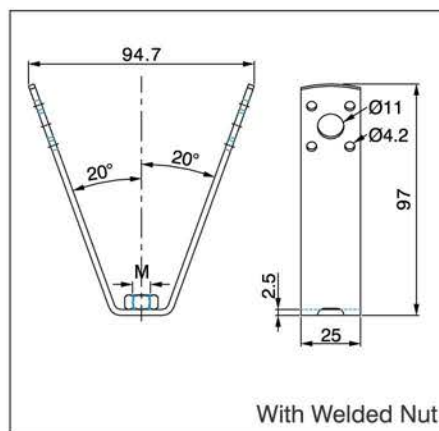
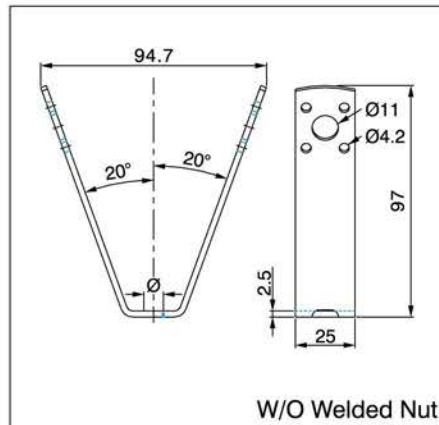
- For the professional fastening element of installation to trapezoidal section sheet.
- Fastening by means of push-through mounting with M8 threaded rod.
- Also possible with Ø4.0mm AIMg 5 sealing rivets (DIN1725) or 4.2mm drilling screws of case-hardened steel.
- Approved by Vds (on request) for fastening pipes up to DN50.
- With or without noise insulation elements.

Technical Data

- **Material (Metal component):**
Steel 1.0332 acc. to DIN EN 10111
- **Zinc plating:**
Electro zinc plated, 8-12 µm
- **Sound absorption unit:**
EPDM, black
- **Hardness:**
45° +/- 5° Shore-A
- **Temperature range:**
-50°C to +110°C

Note

- For mounting sprinkler systems, the use of sheet metal screws or steel blind rivets is **NOT** permitted.
- The maximum permissible load is also dependent on the trapezoidal sheet thickness.



| Article Number | Type | For Threaded Rod [mm] | VdS Approved | FM* Approved | Pack Size [pcs] | Max. Rec. Load [N] |
|----------------|------------------|-----------------------|--------------|--------------|-----------------|--------------------|
| 1002 620 001 | W/O welded nut | Ø10.5 | — | — | 50 | 1300 |
| 1002 620 002 | With welded nut | M8 | ● | — | 50 | 1300 |
| 1002 620 003 | With welded nut | M10 | ● | ● | 50 | 1300 |
| 1002 620 004 | With knurled nut | M8 | — | — | 50 | 1300 |
| 1002 620 005 | With knurled nut | M10 | — | — | 50 | 1300 |

*Type with welded nut M10 for sprinkler systems approved by FM are on the request.

Art. 650

Toggle Plug, Electro-Galvanised

Advantages/Benefits

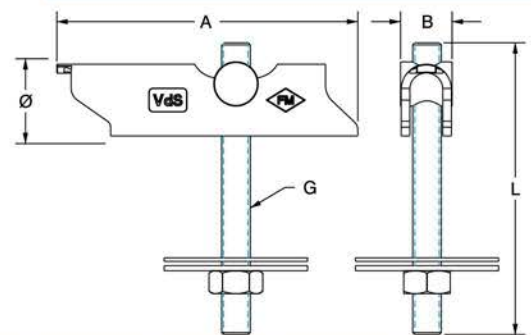
- For fixing pipes up to a nominal diameter of DN50 directly to ceilings made of trapezoidal sheet according to VdS/FM standards of as single point mounting solution.
- In cases where VdS or FM regulations are not applicable or in cases of ventilation systems, larger loads may be fixed via crossbars and by an appropriate number of toggle plugs.
- By turning the threaded rod, it is possible to make height adjustments.
- This threaded rod is secured and cannot be unscrewed completely.
- The Hypalon washer is weather-resistant and thus a crucial safety factor when sealing the mounting bore.

Technical Data

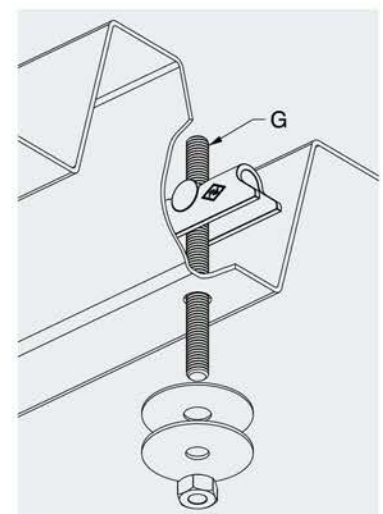
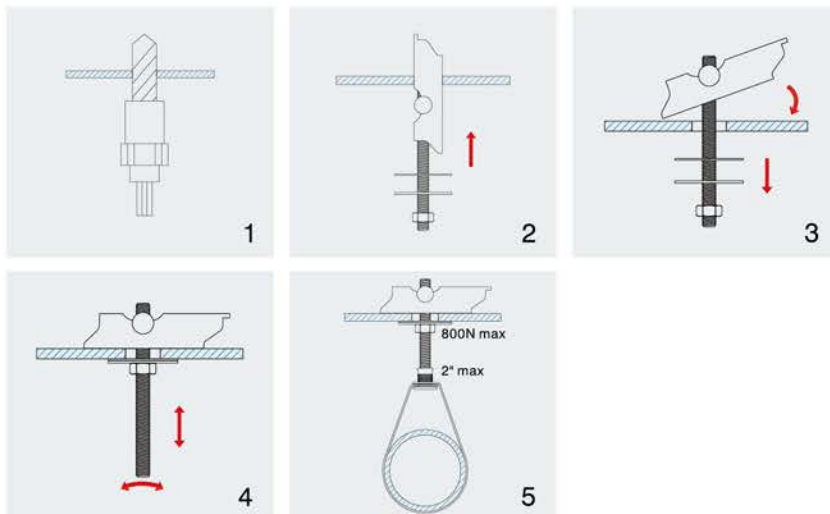
- Material: Steel 1.0332 acc. to DIN EN 10111
- Zinc plating: Electro zinc plated, $\geq 13 \mu\text{m}$

Note

- Permissible carrying capacity of the trapezoidal sheet has to be considered.
- *Type M10 for sprinkler systems approved by FM are on the request.




| Article Number | Grub Screw G [mm] | Length of grub screw L [mm] | Fitting bore \varnothing [mm] | Dimensions [mm] | | FM* Approved | VdS Approved | Pack Size [pcs] | Max. Rec. Load [N] |
|----------------|-------------------|-----------------------------|---------------------------------|-----------------|----|--------------|--------------|-----------------|--------------------|
| | | | | A | B | | | | |
| 0802 650 001 | M6 | 85 | 15 | 84 | 12 | — | — | 100 | 800 |
| 0802 650 002 | M8 | 100 | 22 | 84 | 14 | — | ● | 100 | 800 |
| 0802 650 003 | M8 | 200 | 22 | 84 | 14 | — | ● | 100 | 800 |
| 0802 650 004 | M8 | 300 | 22 | 84 | 14 | — | ● | 50 | 800 |
| 0802 650 005 | M8 | 500 | 22 | 84 | 14 | — | ● | 50 | 800 |
| 0802 650 006 | M10 | 100 | 25 | 84 | 16 | ● | ● | 50 | 800 |
| 0802 650 007 | M10 | 200 | 25 | 84 | 16 | ● | ● | 50 | 800 |



Art. 700

U-Bolt, Electro-Galvanised

| Article Number | D[mm] | Size [inch] | DN | Thread G | Height H [mm] |  [pcs] |
|----------------|-------|-------------|-----|----------|---------------|---|
| 0226 700 001 | 13.0 | 1/4 | 8 | M6 | 34 | 100 |
| 0226 700 002 | 13.0 | 1/4 | 8 | M8 | 34 | 100 |
| 0226 700 003 | 17.0 | 3/8 | 10 | M6 | 42 | 100 |
| 0226 700 004 | 17.0 | 3/8 | 10 | M8 | 42 | 100 |
| 0226 700 005 | 21.3 | 1/2 | 15 | M6 | 37 | 100 |
| 0226 700 006 | 21.3 | 1/2 | 15 | M8 | 37 | 100 |
| 0226 700 007 | 26.9 | 3/4 | 20 | M6 | 48 | 100 |
| 0226 700 008 | 26.9 | 3/4 | 20 | M8 | 64 | 100 |
| 0226 700 009 | 33.7 | 1 | 25 | M6 | 60 | 100 |
| 0226 700 010 | 33.7 | 1 | 25 | M8 | 44 | 100 |
| 0226 700 011 | 33.7 | 1 | 25 | M10 | 52 | 100 |
| 0226 700 012 | 42.4 | 1-1/4 | 32 | M8 | 67 | 100 |
| 0226 700 013 | 42.4 | 1-1/4 | 32 | M10 | 67 | 100 |
| 0226 700 014 | 48.3 | 1-1/2 | 40 | M8 | 78 | 100 |
| 0226 700 015 | 48.3 | 1-1/2 | 40 | M10 | 78 | 100 |
| 0226 700 016 | 60.3 | 2 | 50 | M8 | 90 | 100 |
| 0226 700 017 | 60.3 | 2 | 50 | M10 | 90 | 100 |
| 0226 700 018 | 60.3 | 2 | 50 | M12 | 90 | 100 |
| 0226 700 019 | 76.1 | 2-1/2 | 65 | M10 | 103 | 100 |
| 0226 700 020 | 76.1 | 2-1/2 | 65 | M12 | 105 | 100 |
| 0226 700 021 | 88.9 | 3 | 80 | M10 | 115 | 50 |
| 0226 700 022 | 88.9 | 3 | 80 | M12 | 115 | 50 |
| 0226 700 023 | 114.3 | 4 | 100 | M10 | 146 | 50 |
| 0226 700 024 | 114.3 | 4 | 100 | M12 | 144 | 50 |
| 0226 700 025 | 114.3 | 4 | 100 | M16 | 140 | 50 |
| 0226 700 026 | 139.7 | 5 | 125 | M12 | 173 | 25 |
| 0226 700 027 | 139.7 | 5 | 125 | M16 | 170 | 25 |
| 0226 700 028 | 168.3 | 6 | 150 | M12 | 189 | 25 |
| 0226 700 029 | 168.3 | 6 | 150 | M16 | 191 | 25 |
| 0226 700 030 | 219.1 | 8 | 200 | M12 | 255 | 25 |
| 0226 700 031 | 219.1 | 8 | 200 | M16 | 255 | 25 |
| 0226 700 032 | 273 | 10 | 250 | M12 | 313 | 5 |
| 0226 700 033 | 273 | 10 | 250 | M16 | 313 | 5 |
| 0226 700 034 | 273 | 10 | 250 | M20 | 313 | 5 |
| 0226 700 035 | 323.9 | 12 | 300 | M12 | 364 | 5 |
| 0226 700 036 | 323.9 | 12 | 300 | M16 | 364 | 5 |
| 0226 700 037 | 323.9 | 12 | 300 | M20 | 364 | 5 |

Additional nuts, DIN934

| Article Number | D[mm] | Size [inch] | DN | Thread G | Height H [mm] |  [pcs] |
|----------------|-------|-------------|----|----------|---------------|---|
| 0226 732 001 | - | - | - | M10 | 17 | - |
| 0226 732 002 | - | - | - | M12 | 19 | - |
| 0226 732 003 | - | - | - | M16 | 24 | - |
| 0226 732 004 | - | - | - | M20 | 30 | - |

Additional washers, DIN125A

| | | | | | | |
|--------------|---|---|---|-----|----|---|
| 0226 725 003 | - | - | - | M10 | 20 | - |
| 0226 725 004 | - | - | - | M12 | 24 | - |
| 0226 725 005 | - | - | - | M16 | 30 | - |
| 0226 725 006 | - | - | - | M20 | 37 | - |

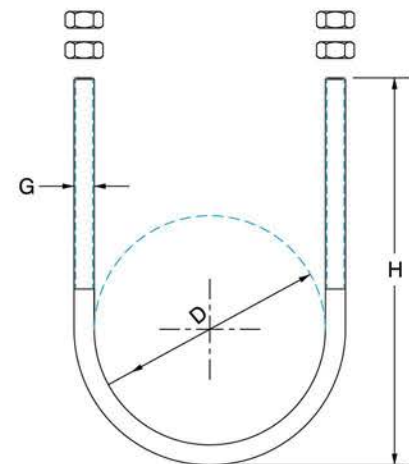


Technical Data

- **Material:**
Steel 4.6
- **Zinc plating:**
Electro zinc plated, 8-12 µm

Note

- Washers acc.to DIN125A and nuts acc.to DIN934 are available subject to customer's special request.
- Also deliverable in stainless steel refer to chapter 12.



Art. 702

U-Bolt, DIN3570, Electro-Galvanised

| Article Number | D[mm] | Size | | Thread G | Height H [mm] | [pcs] |
|----------------|-------------|--------|-------|----------|---------------|-------|
| | | [inch] | DN | | | |
| 0226 702 026 | 25.0-26.9 | 3/4 | 20 | M10 | 70 | 100 |
| 0226 702 033 | 30.0-33.7 | 1 | 25 | M10 | 76 | 100 |
| 0226 702 042 | 38.0-42.4 | 1 1/4 | 32 | M10 | 80 | 100 |
| 0226 702 048 | 44.5-48.3 | 1 1/2 | 40 | M10 | 92 | 100 |
| 0226 702 060 | 57.0-60.3 | 2 | 50 | M12 | 109 | 50 |
| 0226 702 076 | 76.1 | 2 1/2 | 65 | M12 | 125 | 50 |
| 0226 702 088 | 88.9 | 3 | 80 | M12 | 138 | 50 |
| 0226 702 114 | 108.0-114.3 | 4 | 100 | M16 | 171 | 25 |
| 0226 702 139 | 133.0-139.7 | – | 125 | M16 | 191 | 25 |
| 0226 702 168 | 159.0-168.3 | – | 150 | M16 | 217 | 25 |
| 0226 702 193 | 191.0-193.7 | – | (175) | M16 | 249 | 25 |
| 0226 702 219 | 216.0-219.1 | – | 200 | M20 | 283 | 10 |
| 0226 702 273 | 267.0-273.0 | – | 250 | M20 | 334 | 10 |
| 0226 702 323 | 318.0-323.9 | – | 300 | M20 | 385 | 10 |
| 0226 702 368 | 359.0-368.0 | – | 350 | M24 | 435 | 5 |
| 0226 702 419 | 404.6-419.0 | – | 400 | M24 | 487 | 5 |
| 0226 702 512 | 508.0-512.0 | – | 500 | M24 | 589 | 5 |

Additional nuts, DIN934

| Article Number | D[mm] | Size | | Thread G | Height H [mm] | [pcs] |
|----------------|-------|--------|----|----------|---------------|-------|
| | | [inch] | DN | | | |
| 0226 732 003 | – | – | – | M10 | 17 | 100 |
| 0226 732 004 | – | – | – | M12 | 19 | 100 |
| 0226 732 005 | – | – | – | M16 | 24 | 100 |
| 0226 732 006 | – | – | – | M20 | 30 | 50 |
| 0226 732 007 | – | – | – | M24 | 36 | 50 |

Additional washers, DIN125A

| Article Number | D[mm] | Size | | Thread G | Height H [mm] | [pcs] |
|----------------|-------|--------|----|----------|---------------|-------|
| | | [inch] | DN | | | |
| 0226 725 003 | – | – | – | M10 | 20 | 100 |
| 0226 725 004 | – | – | – | M12 | 24 | 100 |
| 0226 725 005 | – | – | – | M16 | 30 | 100 |
| 0226 725 006 | – | – | – | M20 | 37 | 100 |
| 0226 725 007 | – | – | – | M24 | 44 | 100 |

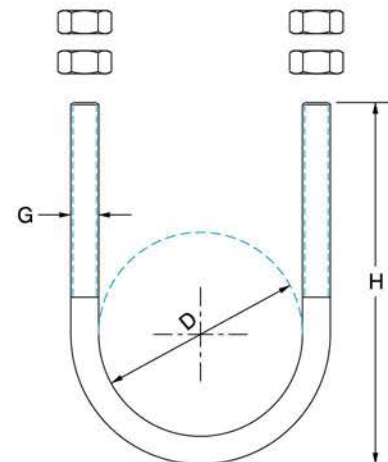


Technical Data

- **Material:**
Steel 1.0332 acc. to DIN EN 10111
- **Zinc plating:**
Electro zinc plated, 8–12 µm

Note

- Including the extra 4 nuts (DIN 934) and 4 washers (DIN125A) by electro galvanised finish.
- Also deliverable in stainless steel, refer to "Stainless Steel Range" section.
- Also refer to "Fixing Fasteners & Accessories" section for the details.

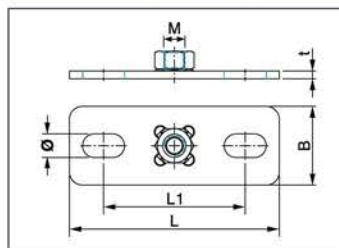


Art. 780

Base Plates With Nut, By Spot Welding

Technical Data

- **Material:**
Mild carbon steel
- **Zinc plating:**
Electro zinc plated, 8-12 μm



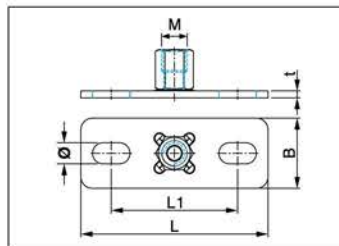
| Article Number | Welded Nut M [mm] | Base Plate Dimensions [mm] | | | | | Ø | Pack Size [pcs] |
|----------------|-------------------|----------------------------|----|----|-----|-------|-----|-----------------|
| | | L | B | L1 | t | | | |
| 0226 780 001 | M8 | 80 | 30 | 54 | 3.0 | 9x16 | 100 | |
| 0226 780 002 | M10 | 80 | 30 | 54 | 3.0 | 9x16 | 100 | |
| 0226 780 003 | M12 | 80 | 30 | 54 | 3.0 | 9x16 | 100 | |
| 0226 780 004 | M8 | 120 | 40 | 80 | 4.0 | 11x19 | 100 | |
| 0226 780 005 | M10 | 120 | 40 | 80 | 4.0 | 11x19 | 100 | |
| 0226 780 006 | M12 | 120 | 40 | 80 | 4.0 | 11x19 | 100 | |
| 0226 780 007 | M16 | 120 | 40 | 80 | 4.0 | 11x19 | 100 | |

Art. 782

Base Plates With Combi-nut, By Spot Welding

Technical Data

- **Material:**
Mild carbon steel
- **Zinc plating:**
Electro zinc plated, 8-12 μm



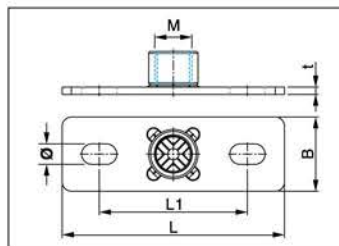
| Article Number | Welded Nut M [mm] | Base Plate Dimensions [mm] | | | | | Ø | Pack Size [pcs] |
|----------------|-------------------|----------------------------|----|----|-----|-------|-----|-----------------|
| | | L | B | L1 | t | | | |
| 0226 782 001 | M8/M10 | 80 | 30 | 54 | 3.0 | 9x16 | 100 | |
| 0226 782 002 | M8/M10 | 120 | 40 | 80 | 4.0 | 11x19 | 100 | |

Art. 784

Base Plates With Socket, By Spot Welding

Technical Data

- **Material:**
Mild carbon steel
- **Zinc plating:**
Electro zinc plated, 8-12 μm



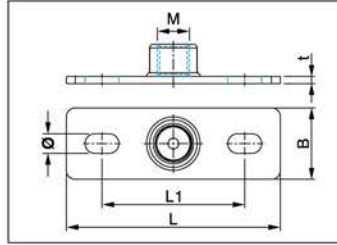
| Article Number | Welded Nut M ["] | Base Plate Dimensions [mm] | | | | | Ø | Pack Size [pcs] |
|----------------|------------------|----------------------------|----|----|-----|-------|-----|-----------------|
| | | L | B | L1 | t | | | |
| 0226 784 001 | 1/2 | 80 | 30 | 54 | 3.0 | 9x16 | 100 | |
| 0226 784 002 | 1/2 | 120 | 40 | 80 | 4.0 | 11x19 | 100 | |
| 0226 784 003 | 3/4 | 120 | 40 | 80 | 4.0 | 11x19 | 100 | |

Art. 786

Base Plates With Socket, By CO₂ Welding

Technical Data

- **Material:**
Mild carbon steel
- **Zinc plating:**
Electro zinc plated, 8-12 μm



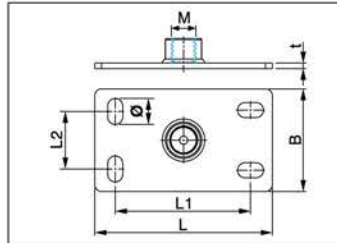
| Article Number | Welded Nut M ["] | Base Plate Dimensions [mm] | | | | | Ø | Pack Size [pcs] |
|----------------|------------------|----------------------------|----|----|-----|-------|-----|-----------------|
| | | L | B | L1 | t | | | |
| 0226 786 001 | 1/2 | 120 | 40 | 80 | 4.0 | 11x19 | 100 | |
| 0226 786 002 | 3/4 | 120 | 40 | 80 | 4.0 | 11x19 | 100 | |
| 0226 786 003 | 1 | 120 | 40 | 80 | 4.0 | 11x19 | 100 | |

Art. 788

Base Plates With Socket, By CO₂ Welding

Technical Data

- **Material:**
Mild carbon steel
- **Zinc plating:**
Electro zinc plated, 8-12 μm



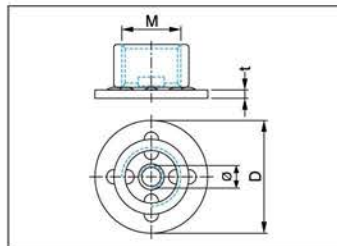
| Article Number | Welded Nut M ["] | Base Plate Dimensions [mm] | | | | | | Pack Size [pcs] |
|----------------|------------------|----------------------------|----|-----|----|-----|-------|-----------------|
| | | L | B | L1 | L2 | t | Ø | |
| 0226 788 001 | 1/2 | 130 | 75 | 100 | 44 | 4.0 | 11x17 | 100 |
| 0226 788 002 | 3/4 | 130 | 75 | 100 | 44 | 4.0 | 11x17 | 100 |
| 0226 788 003 | 1 | 130 | 75 | 100 | 44 | 4.0 | 11x17 | 100 |

Art. 767

Base Plates(Round), By Spot Welding

Technical Data

- **Material:**
Mild carbon steel
- **Zinc plating:**
Electro zinc plated, 8-12 μm



| Article Number | Welded Nut M ["] | Base Plate Dimensions [mm] | | | Pack Size [pcs] |
|----------------|------------------|----------------------------|----|-----|-----------------|
| | | Ø | D | t | |
| 0226 767 001 | 1/2 | M8 | 40 | 3.0 | 100 |
| 0226 767 002 | 1/2 | Ø10 | 40 | 3.0 | 100 |
| 0226 767 003 | 1/2 | M8 | 60 | 3.0 | 50 |

Art. 508

Sliding Nuts, For C Channel & Strut

Applications

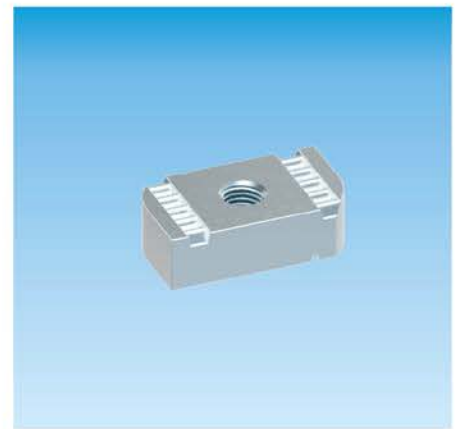
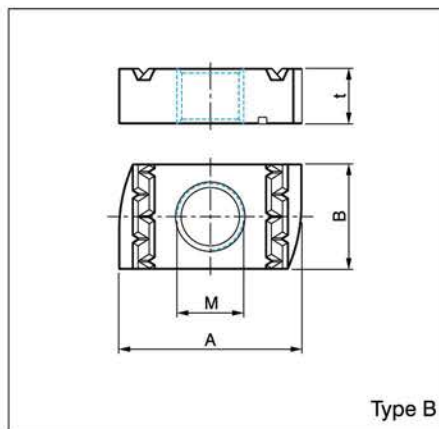
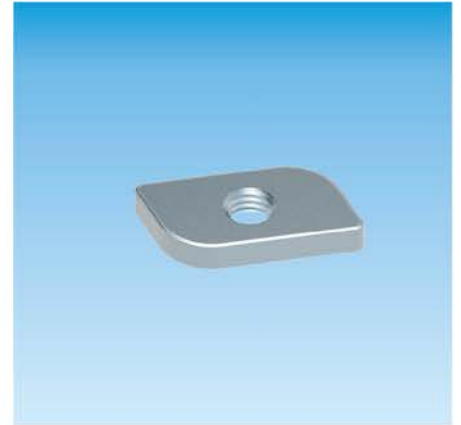
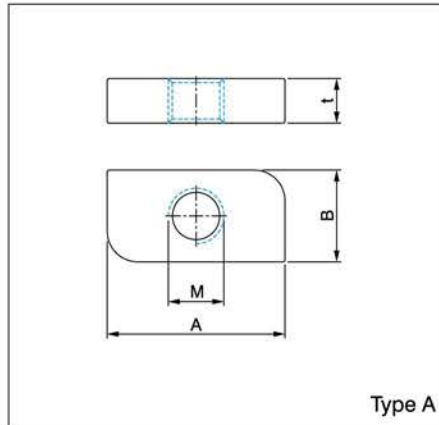
- As connecting element between:
- * Rail load-bearing construction and pipe clamps.
- * Cantilever brackets and pipe clamps.
- Slip-resistant or shear/projecting joints with hexagon bolt, threaded rod, washer and nut.

Technical Data

- **Material:**
Steel by grade 4.6
- **Zinc plating:**
Electro zinc plated, 3–8 µm

Note

- Recommended for direct fastening of pipe clamps.



| Article Number | Type | For Channel & Strut | Thread M [mm] | Dimensions [mm] | | | Pack Size [pcs] |
|----------------|--------|---------------------|---------------|-----------------|----|------|-----------------|
| | | | | A | B | t | |
| 0531 508 001 | Type A | 27/28, 28/30, 30/15 | M8 | 22 | 13 | 5.0 | 100 |
| 0531 508 002 | | 38/40, 38/40*D | M8 | 30 | 18 | 8.0 | 100 |
| 0531 508 003 | | 40/60, 40/60*D | M10 | 30 | 18 | 8.0 | 100 |
| 0531 508 004 | Type B | 41/21, 41/41 | M8 | 35 | 20 | 6.0 | 100 |
| 0531 508 005 | | 41/62 | M10 | 35 | 20 | 8.0 | 100 |
| 0531 508 006 | | | M12 | 35 | 20 | 10.0 | 100 |

Art. 509

U-Shaped Washer, For C Channel/Strut

Applications

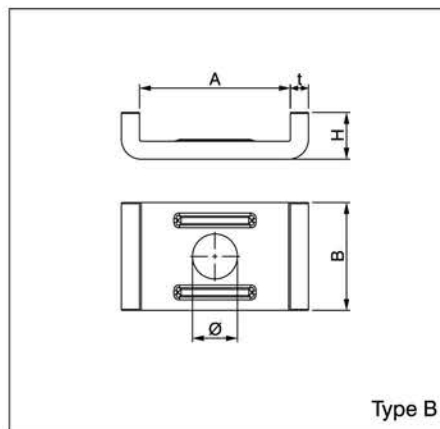
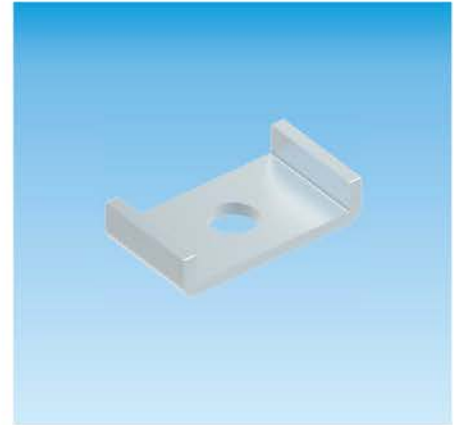
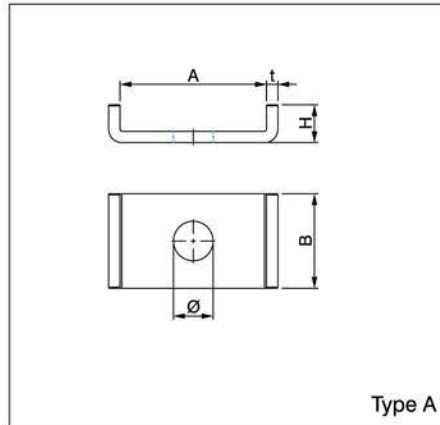
- To stabilise the C channels and struts in connection with hammer head screws or hammer head fasteners.
- To prevent lateral bending up of the C channel and Strut under a load.

Technical Data

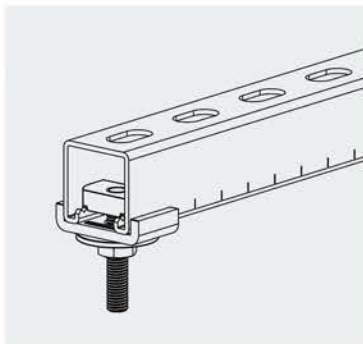
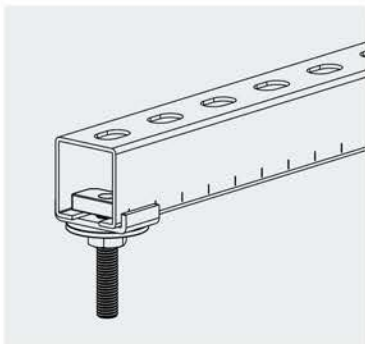
- **Material:**
Steel 1.0332 acc. to DIN EN 10111
- **Zinc plating:**
Electro zinc plated, 3–8 µm
Hot-dipped galv. acc. to DIN EN ISO 1461

Note

- The retaining washer can be used for proper fastening with a fixing anchor bolt.



| Article Number | | Type | For Channel & Strut | Connecting Hole Ø [mm] | Dimensions [mm] | | | | Pack Size [pcs] |
|----------------|------------------|--------|----------------------------|------------------------|-----------------|----|----|-----|-----------------|
| Galvanised | Hot-dipped galv. | | | | A | B | H | t | |
| 0531 509 001 | — | Type A | 27/18, 28/30 | 8.5 | 28.5 | 25 | 10 | 2.0 | 100 |
| 0531 509 002 | — | | 30/15 | 8.5 | 31.0 | 25 | 10 | 2.0 | 100 |
| 0531 509 003 | — | | 38/40 | 10.5 | 39.0 | 30 | 13 | 2.5 | 100 |
| 0531 509 004 | — | | 40/60 | 10.5 | 41.0 | 30 | 13 | 2.5 | 100 |
| 0531 509 005 | — | | 41/21, 41/41 | 10.5 | 42.0 | 30 | 13 | 3.0 | 100 |
| 0531 509 006 | — | | 41mm series | 13.5 | 42.0 | 30 | 13 | 3.0 | 100 |
| 0531 509 007 | 0531 509 011 | Type B | For all 41mm series struts | 9.0 | 42.0 | 30 | 10 | 5.0 | 50 |
| 0531 509 008 | 0531 509 012 | | | 11.0 | 42.0 | 30 | 10 | 5.0 | 50 |
| 0531 509 009 | 0531 509 013 | | | 13.0 | 42.0 | 30 | 10 | 5.0 | 50 |
| 0531 509 010 | 0531 509 014 | | | 17.0 | 42.0 | 30 | 10 | 5.0 | 50 |



Art. 525

U-Holder Beam Clamp, Electro-Galvanised

Advantages/Benefits

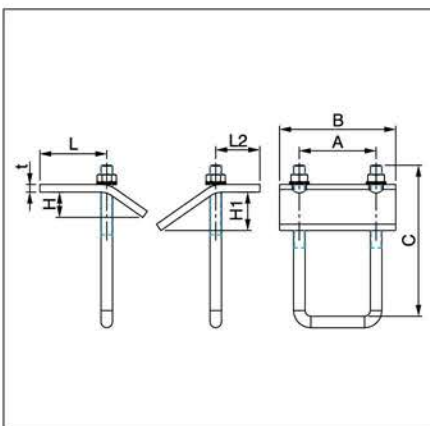
- The one of ideal solution for fixing C channel and strut to steel girders.
- For fixing C channel and strut to steel girder without drilling and welding.
- Subsequent adjustments are possible at any time.
- Suitable for all flange thicknesses of the common girders.
- Saving the working time on site.

Technical Data

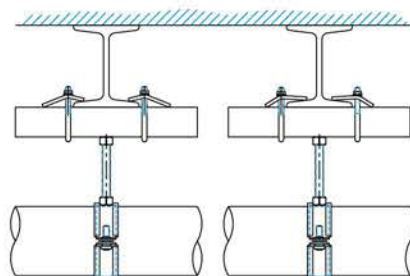
- **Material (Metal component):**
Steel 1.0332 acc. to DIN EN 10111
- **Zinc plating:**
Electro zinc plated, 8-12 µm

Attention

- Always use two U-holder beam clamps for fastening to the each steel girder.



| Loading Data | | |
|-----------------------|-------------|--------------------|
| For Channel and Strut | Hoop Thread | Max. Rec. Load [N] |
| 27/18, 28/30 | M6 | 2200 |
| 38/40 | M8 | 3300 |
| 40/60 | M8 | 3300 |
| 38/40, 40/60 | M10 | 6000 |
| 38/40*D, 40/60*D | M10 | 4800 |



| Article Number | For Channel & Strut | Hoop Thread [mm] | Dimensions [mm] | | | | | | | | Pack Size [pcs] |
|----------------|---------------------|------------------|-----------------|----|-----|----|----|-----|----|----|-----------------|
| | | | A | B | C | H1 | H2 | t | L1 | L2 | |
| 0531 525 001 | 27/18,28/30,30/15 | M6 | 37 | 60 | 80 | 29 | 18 | 6.0 | 44 | 28 | 25 |
| 0531 525 002 | 38/40 | M8 | 48 | 70 | 80 | 25 | 17 | 6.0 | 38 | 27 | 25 |
| 0531 525 003 | 40/60 | M8 | 48 | 70 | 100 | 25 | 17 | 6.0 | 38 | 27 | 25 |
| 0531 525 004 | 38/40*D | M10 | 50 | 80 | 100 | 25 | 19 | 6.0 | 40 | 31 | 25 |
| 0531 525 005 | 40/60*D | M10 | 50 | 80 | 180 | 25 | 19 | 6.0 | 40 | 31 | 10 |
| 0531 525 006 | 41/21,41/41,41/21*D | M10 | 52 | 80 | 80 | 25 | 19 | 6.0 | 40 | 31 | 25 |
| 0531 525 007 | 41/62,41/41*D | M10 | 50 | 80 | 180 | 25 | 19 | 6.0 | 40 | 31 | 25 |
| 0531 525 008 | 41/62*D | M10 | 50 | 80 | 180 | 25 | 19 | 6.0 | 40 | 31 | 10 |

Art. 541

Cantilever Bracket, Type 41mm Strut

Advantages/Benefits

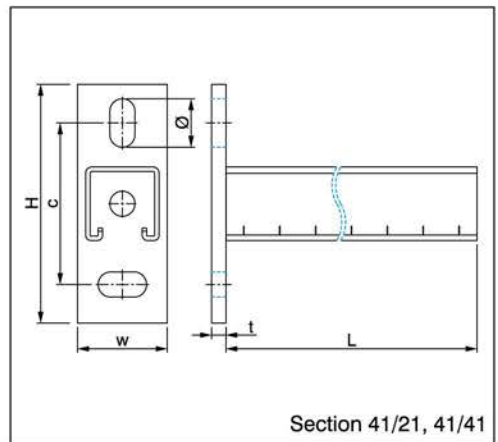
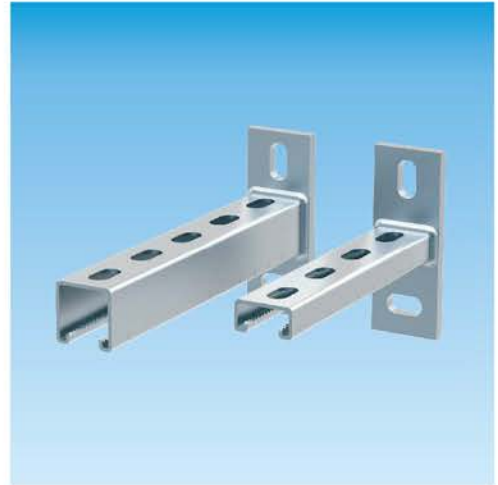
- Mainly for pipe mounting directly to the wall but also for fixings and constructions to ceilings and floor areas.
- Fast and simple installation of tracks.
- Robust base plate for load-bearing constructions.
- Versatile usage possibilities through stepped lengths.
- Long slots in the rail offer versatile installation possibilities.
- Long slots in the base plate offer good height adjustment.

Technical Data

- Material: Steel 1.0332 acc. to DIN EN 10111
- Zinc plating: Electro zinc plated, 8–12 µm
Hot-dipped galv. acc. to DIN EN ISO 1461

Note

- * Available at other arm lengths subject to the special request.
- Please select the stainless steel range for outdoor use.



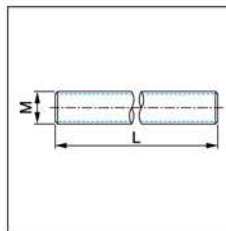
| Article Number | | Section [mm] | Length* L [mm] | Dimensions [mm] | | | | | Weight [kg] | Pack Size** [pcs] |
|----------------|------------------|--------------|----------------|-----------------|-----|-----|-------|-------|-------------|-------------------|
| Galvanised | Hot-dipped galv. | | | H | w | t | C | Ø | | |
| 0531 541 301 | 0531 541 307 | 41/21/2.5 | 150 | 133 | 50 | 8.0 | 90 | 14x27 | 0.75 | — |
| 0531 541 302 | 0531 541 308 | | 200 | 133 | 50 | 8.0 | 90 | 14x27 | 0.84 | — |
| 0531 541 303 | 0531 541 309 | | 300 | 133 | 50 | 8.0 | 90 | 14x27 | 1.05 | — |
| 0531 541 304 | 0531 541 310 | | 450 | 133 | 50 | 8.0 | 90 | 14x27 | 1.30 | — |
| 0531 541 305 | 0531 541 311 | | 500 | 133 | 50 | 8.0 | 90 | 14x27 | 1.40 | — |
| 0531 541 306 | 0531 541 312 | | 600 | 133 | 50 | 8.0 | 90 | 14x27 | 1.59 | — |
| 0531 541 601 | 0531 541 612 | 41/41/2.5 | 150 | 133 | 50 | 8.0 | 90 | 14x27 | 0.87 | — |
| 0531 541 602 | 0531 541 613 | | 200 | 133 | 50 | 8.0 | 90 | 14x27 | 1.00 | — |
| 0531 541 603 | 0531 541 614 | | 300 | 133 | 50 | 8.0 | 90 | 14x27 | 1.26 | — |
| 0531 541 604 | 0531 541 615 | | 450 | 133 | 50 | 8.0 | 90 | 14x27 | 1.64 | — |
| 0531 541 605 | 0531 541 616 | | 500 | 133 | 50 | 8.0 | 90 | 14x27 | 1.78 | — |
| 0531 541 606 | 0531 541 617 | | 600 | 133 | 50 | 8.0 | 90 | 14x27 | 2.03 | — |
| 0531 541 607 | 0531 541 618 | | 750 | 133 | 50 | 8.0 | 90 | 14x27 | 2.42 | — |
| 0531 541 608 | 0531 541 619 | | 900 | 133 | 50 | 8.0 | 90 | 14x27 | 2.83 | — |
| 0531 541 609 | 0531 541 620 | | 1000 | 133 | 50 | 8.0 | 90 | 14x27 | 3.10 | — |
| 0531 541 610 | 0531 541 621 | | 1200 | 133 | 50 | 8.0 | 90 | 14x27 | 3.64 | — |
| 0531 541 611 | 0531 541 622 | 1500 | 133 | 50 | 8.0 | 90 | 14x27 | 4.45 | — | |

** Pack size are variable depend on customer's each individual orders.

Art. 720

Threaded Rod, DIN975

| Article Number | Thread M [mm] | Overall length L [m] | Pack Size [pcs] |
|----------------|---------------|----------------------|-----------------|
| 0226 720 001 | M6 | 1 | 100 |
| 0226 720 002 | M6 | 2 | 50 |
| 0226 720 003 | M6 | 3 | 25 |
| 0226 720 004 | M8 | 1 | 50 |
| 0226 720 005 | M8 | 2 | 25 |
| 0226 720 006 | M8 | 3 | 10 |
| 0226 720 007 | M10 | 1 | 25 |
| 0226 720 008 | M10 | 2 | 25 |
| 0226 720 009 | M10 | 3 | 10 |
| 0226 720 010 | M12 | 1 | 20 |
| 0226 720 011 | M12 | 2 | 20 |
| 0226 720 012 | M12 | 3 | 10 |
| 0226 720 013 | M16 | 1 | 10 |
| 0226 720 014 | M16 | 2 | 10 |
| 0226 720 015 | M16 | 3 | 5 |



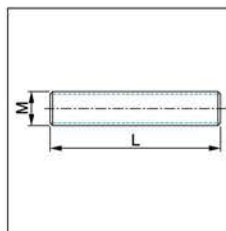
Technical Data

- **Material:**
Mild carbon steel, Grade 4.6
- **Zinc plating:**
Electro zinc plated, 3-8 μm

Art. 716

Threaded Pins, DIN976

| Article Number | Thread M [mm] | Overall length L [mm] | Pack Size [pcs] |
|----------------|---------------|-----------------------|-----------------|
| 0226 716 001 | M8 | 30 | 100 |
| 0226 716 002 | M8 | 40 | 100 |
| 0226 716 003 | M8 | 50 | 100 |
| 0226 716 004 | M8 | 60 | 100 |
| 0226 716 005 | M8 | 70 | 100 |
| 0226 716 006 | M8 | 80 | 100 |
| 0226 716 007 | M8 | 90 | 100 |
| 0226 716 008 | M8 | 100 | 100 |
| 0226 716 009 | M8 | 150 | 100 |
| 0226 716 010 | M8 | 200 | 100 |
| 0226 716 012 | M10 | 30 | 100 |
| 0226 716 013 | M10 | 40 | 100 |
| 0226 716 014 | M10 | 50 | 100 |
| 0226 716 015 | M10 | 60 | 100 |
| 0226 716 016 | M10 | 70 | 100 |
| 0226 716 017 | M10 | 80 | 100 |
| 0226 716 018 | M10 | 90 | 100 |
| 0226 716 019 | M10 | 100 | 100 |
| 0226 716 021 | M10 | 150 | 100 |
| 0226 716 022 | M10 | 200 | 100 |
| 0226 716 023 | M12 | 40 | 100 |
| 0226 716 024 | M12 | 60 | 100 |
| 0226 716 025 | M12 | 80 | 100 |
| 0226 716 026 | M12 | 100 | 100 |
| 0226 716 027 | M12 | 150 | 100 |
| 0226 716 028 | M12 | 200 | 100 |
| 0226 716 029 | M16 | 100 | 100 |
| 0226 716 030 | M16 | 150 | 100 |
| 0226 716 031 | M16 | 200 | 100 |



Technical Data

- **Material:**
Mild carbon steel, Grade 4.6
- **Zinc plating:**
Electro zinc plated, 3-8 μm

Art. 500

Support C Channel, Pre-galvanised

Advantages/Benefits

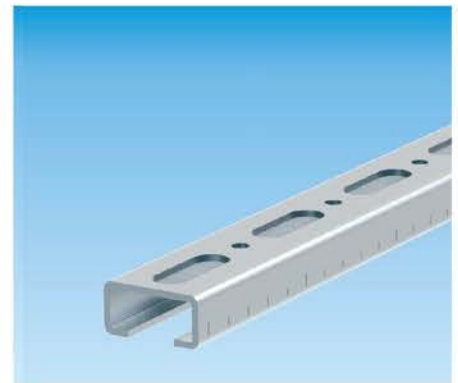
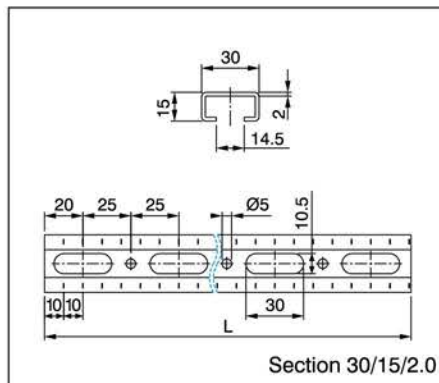
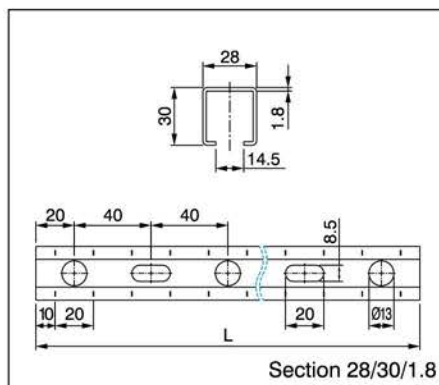
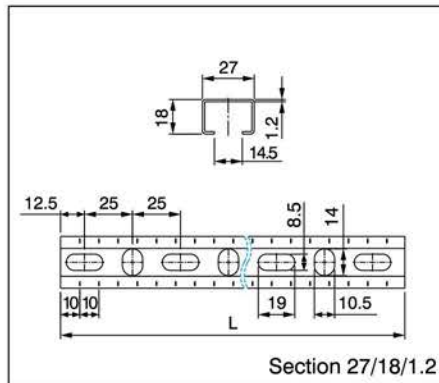
- Channel as C profile for the save installation of fastenings can be horizontally and vertically adjusted.
- **Quick and efficient fixing element of multiple and single pipes.**
- Ideal combination of high flexural stiffness and ease of installation.
- Ideal for space-saving support structure for multiple pipes between ceiling joists.
- Also ideal as support structure for air ducts.
- Scale marks on the side simplify the alignment of fastening elements during the installation and facilitate measuring and cutting to the length of the section locally on site.
- Large number of connection components allow high strength supports to be constructed.

Technical Data

- **Material:**
Steel 1.0332 acc. to DIN EN 10111
- **Zinc plating:**
Pre-galvanised acc. to DIN EN 10327

Note

- * Available at other channel lengths subject to the special request.
- Particular sizes and hole patterns available on clients special request.
- Refer to the chapter of Technical Information for load-bearing capacity of the channels.
- Please select the stainless steel range for outdoor mounting.



| Article Number | | Section [mm] | Thickness [mm] | Length* L [m] | Weight [kg/m] | Pack Size** [pcs] |
|----------------|------------------|--------------|----------------|---------------|---------------|-------------------|
| Pre-galvanised | Hot-dipped galv. | | | | | |
| 0531 500 101 | — | 27/18/1.2 | 1.2 | 2 | 0.62 | — |
| 0531 500 102 | — | | 1.2 | 3 | 0.62 | — |
| 0531 500 103 | — | | 1.2 | 6 | 0.62 | — |
| 0531 500 201 | — | 28/30/1.8 | 1.8 | 2 | 1.25 | — |
| 0531 500 202 | — | | 1.8 | 3 | 1.25 | — |
| 0531 500 203 | — | | 1.8 | 6 | 1.25 | — |
| 0531 500 301 | — | 30/15/2.0 | 2.0 | 2 | 0.96 | — |
| 0531 500 302 | — | | 2.0 | 3 | 0.96 | — |
| 0531 500 303 | — | | 2.0 | 6 | 0.96 | — |

** Pack size are variable depend on customer's each individual orders.

Art. 500

Support C Channel, Pre-galvanised

Advantages/Benefits

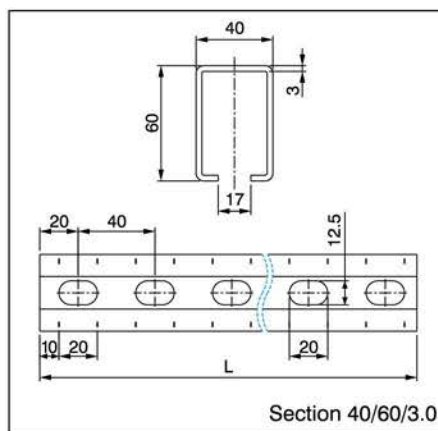
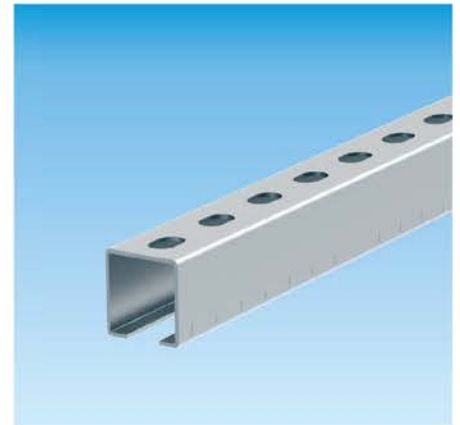
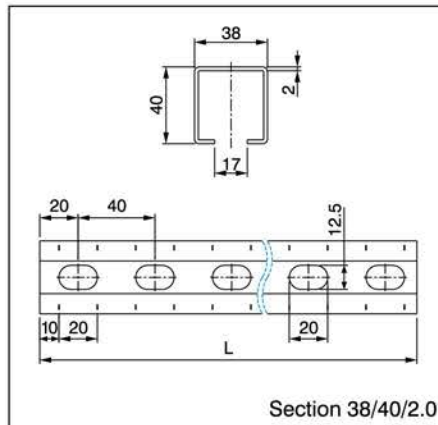
- Channel as C profile for the save installation of fastenings can be horizontally and vertically adjusted.
- **Quick and efficient fixing element of multiple and single pipes.**
- Ideal combination of high flexural stiffness and ease of installation.
- Ideal for space-saving support structure for multiple pipes between ceiling joists.
- Also ideal as support structure for air ducts.
- Scale marks on the side simplify the alignment of fastening elements during the installation and facilitate measuring and cutting to the length of the section locally on site.
- Large number of connection components allow high strength supports to be constructed.

Technical Data

- **Material:**
Steel 1.0332 acc. to DIN EN 10111
- **Zinc plating:**
Pre-galvanised acc. to DIN EN 10327

Note

- * Available at other channel lengths subject to the special request.
- Particular sizes and hole patterns available on clients special request.
- Refer to the chapter of Technical Information for load-bearing capacity of the channels.
- Please select the stainless steel range for outdoor mounting.



| Article Number | | Section [mm] | Thickness [mm] | Length* L [m] | Weight [kg/m] | Pack Size** [pcs] |
|----------------|------------------|--------------|----------------|---------------|---------------|-------------------|
| Pre-galvanised | Hot-dipped galv. | | | | | |
| 0531 500 401 | — | 38/40/2.0 | 2.0 | 2 | 1.95 | — |
| 0531 500 402 | — | | 2.0 | 3 | 1.95 | — |
| 0531 500 402 | — | | 2.0 | 6 | 1.95 | — |
| 0531 500 501 | — | 40/60/3.0 | 3.0 | 2 | 3.83 | — |
| 0531 500 502 | — | | 3.0 | 3 | 3.83 | — |
| 0531 500 503 | — | | 3.0 | 6 | 3.83 | — |

** Pack size are variable depend on customer's each individual orders.

Art. 500

Support C Channel, Pre-galvanised

Advantages/Benefits

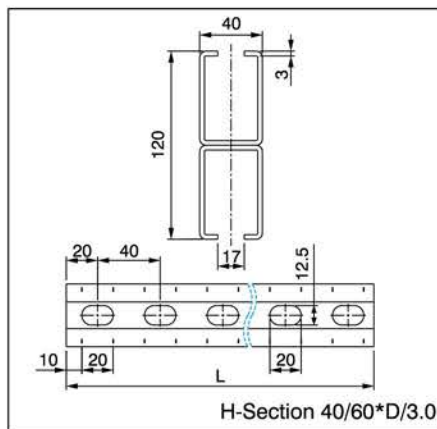
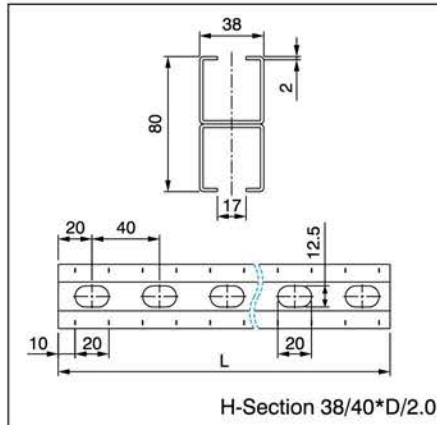
- Channel as C profile for the save installation of fastenings can be horizontally and vertically adjusted.
- **Quick and efficient fixing element of multiple and single pipes.**
- Ideal combination of high flexural stiffness and ease of installation.
- Ideal for space-saving support structure for multiple pipes between ceiling joists.
- Also ideal as support structure for air ducts.
- Scale marks on the side simplify the alignment of fastening elements during the installation and facilitate measuring and cutting to the length of the section locally on site.
- Large number of connection components allow high strength supports to be constructed.

Technical Data

- **Material:**
Steel 1.0332 acc. to DIN EN 10111
- **Zinc plating:**
Pre-galvanised acc. to DIN EN 10327

Note

- * Available at other channel lengths subject to the special request.
- Particular sizes and hole patterns available on clients special request.
- Refer to the chapter of Technical Information for load-bearing capacity of the channels.
- Please select the stainless steel range for outdoor mounting.



| Article Number | | H-Section [mm] | Thickness [mm] | Length* L [m] | Weight [kg/m] | Pack Size** [pcs] |
|----------------|------------------|----------------|----------------|---------------|---------------|-------------------|
| Pre-galvanised | Hot-dipped galv. | | | | | |
| 0531 500 601 | — | 38/40*D/2.0 | 2.0 | 2 | 3.90 | — |
| 0531 500 602 | — | | 2.0 | 3 | 3.90 | — |
| 0531 500 603 | — | | 2.0 | 6 | 3.90 | — |
| 0531 500 701 | — | 40/60*D/3.0 | 3.0 | 3 | 7.66 | — |
| 0531 500 702 | — | | 3.0 | 6 | 7.66 | — |

** Pack size are variable depend on customer's each individual orders.